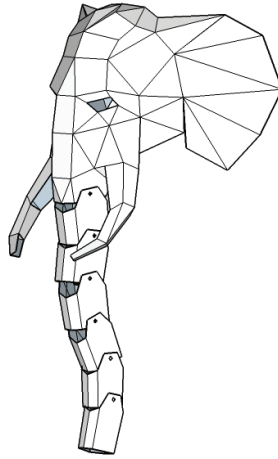




WINTERCROFT



# Elephant Mask

Designed by Steve Wintercrott

## Materials required

- ☐ Access to a printer and 29 sheets of A4 paper or US Letter paper.
- ☐ Thin card, the type used in cereal boxes is ideal. Thicker card like corrugated card will not bend to the detailed folds. The approximate area of flat card that you need is around 12 sheets of A3 card.
- ☐ Spray mount, Pritt stick, PVA or something that will stick paper to card.
- ☐ Twelve split pin paper fasteners. You can pick these up from most stationary shops.
- ☐ Scissors or a craft knife.
- ☐ Straight forward sticky tape, you can use basic cheap tape but I've found that Scotch Magic invisible tape gives a neater finish.
- ☐ Some spare time – approximately 4 to 6 hours.

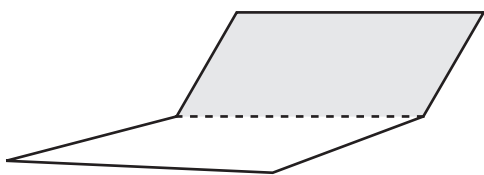
## Printing instructions

- ☐ The templates are 1:1 scale and are intended to be printed at ACTUAL SIZE on either A4 paper (210mm X 297mm) or US Letter paper (8½" X 11"). In your printer setting please select the type of paper that you are printing on but DO NOT SCALE THE TEMPLATES TO FIT THE PAPER.
- ☐ I have included a 150mm line on the first page of the templates so that you can check the scale. The line should measure 150mm after printing but plus or minus 2mm is acceptable. There is more information on printing the templates in our FAQ section of the website.

## Instructions for assembly

### Cutting and Folding

1. Having printed the templates on paper, trim them roughly to the approximate size, they don't have to be neat. Trimming off the excess paper makes it easier to arrange the templates on the card.
2. If you are working with reclaimed card unfold your boxes so that you have flat sheets to work with, then glue the templates to the card. When you assemble your mask the templates will be on the inside faces of the mask. First choice for gluing the templates would be Spray Mount. It's available from most art shops but can be expensive. A glue stick is a cheaper alternative and also works really well. Make sure that the templates are well bonded to the card.
3. Cut out the pieces along the solid outlines. Cut the solid outlines only, not the dashes.
4. The trunk pieces have circles marked on them. These are the pivot point for the articulated trunk. I use a piece of play dough to rest on and pierce the centre of each circle with an old biro. Don't forget the two circles on the head piece that join the trunk to the head.
5. The fold lines on the templates are marked as either a dashed line representing a valley fold or dashes with dots to represent a mountain fold. This is with the templates on the inside of the mask.
6. Score all of the folds marked on templates with something blunt like an old Biro. I find that resting on top of an old piece of card helps to form the creases. Score and fold all of your parts.



Dashed line represents  
a valley fold.

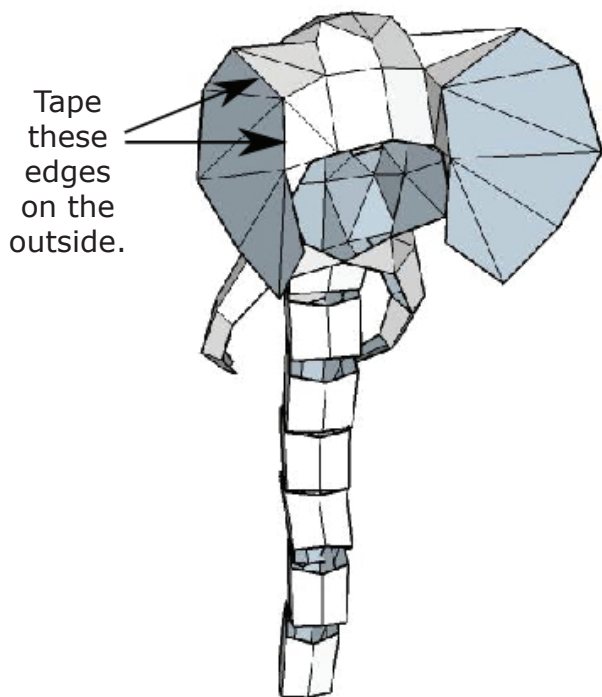


Dashed line with dots  
represents a mountain fold.

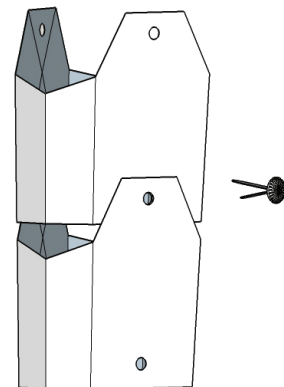
## Assembly

7. Firstly find the parts labelled as the trunk and set these to one side until later. Then beginning with the front of the face on page 7 choose any edge and find the neighbouring part with matching numbers. Tape together the edges with corresponding numbers for example number 55 joins to number 55. Taping on the outside makes things easier for most parts but if you come to a part that is difficult to tape outside, try taping inside the mask.

If a join feels like it is under stress, tape it inside and out to reinforce it. Work backwards from the nose towards the back off the head. As you attach the ears you will notice that they are only joined along the front edge. Once you have assembled the head you can tape along the back edge of the ears as shown in the diagram.



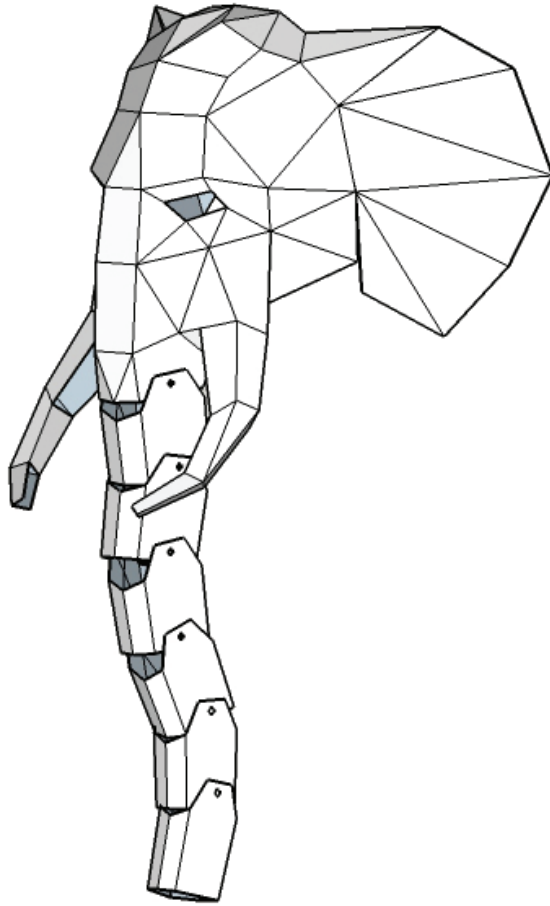
8. Once you have built the head, assemble the individual parts of the trunk in the same way. Then join the parts of the trunk to the head using split pin paper fasteners. Start at the top of trunk part 1, This is the widest part of the largest piece. Push the paper fastener through the centre of the circle. Lining this hole up with the one that you made in the head and push the fastener through the centre of the circle on the head part. Open up the fastener inside the trunk folding the pins back flat to secure the parts in place. Always keep the tabs at the top of each trunk part on the outside.



9. Make the head band following the instructions on the final page and tape it to the inside of the mask. You might need to adjust the band forward or back to get the best fit.
10. You can paint or decorate your mask in any way that you like. Have a look at our website or facebook page for inspiration.

Please share photos of your creations on our facebook page.

Tag your photos with the hashtags **#wintercrafter** and **#wc-elephant** to share them with our community.



If you run in to any problems or have any questions  
please check the frequently asked questions on:

**[www.wintercrafter.com](http://www.wintercrafter.com)**

If you still can't find the answer to your questions,  
then please send me a message to the address in the contacts below.

## Please note

These designs are copyrighted and are intended for your own personal use only. Please use this file to make as many masks as you like for yourself.

Please don't share or steal the templates, there was a lot of work involved in creating them. If you want to use them for any other reason then please get in touch.

**THESE MASKS ARE A PERSONAL CRAFT PROJECT, PLEASE DO NOT USE THEM FOR PROFIT.**

## Contact us

I would love to see your finished creations, please share them on my Facebook page:

**[www.facebook.com/wintercraftermasks](https://www.facebook.com/wintercraftermasks)**

or use the Instagram handle:

**@wintercrafter**

Many thanks and have fun,  
Steve

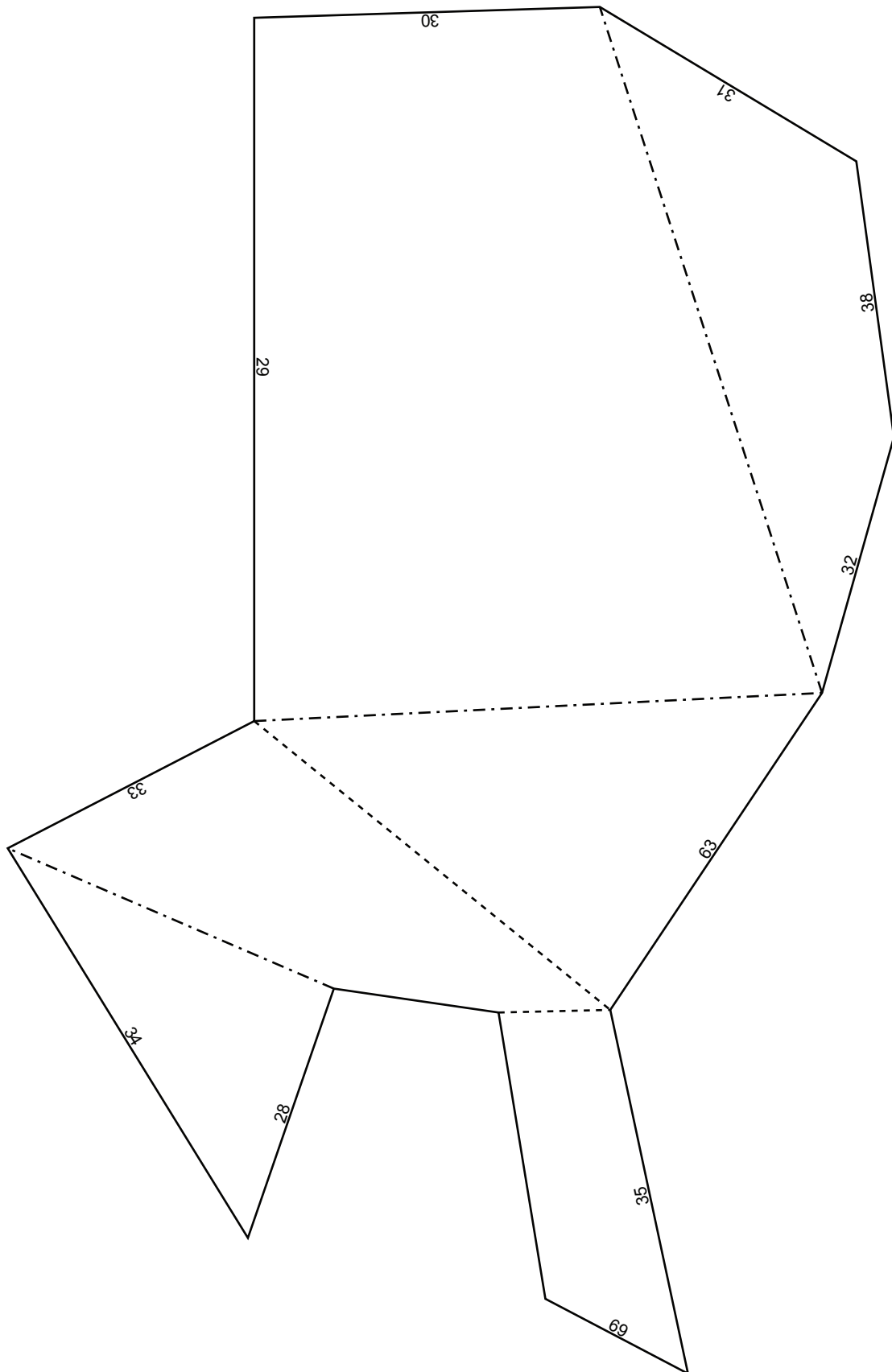
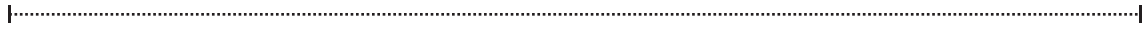
**[info@wintercrafter.com](mailto:info@wintercrafter.com)**

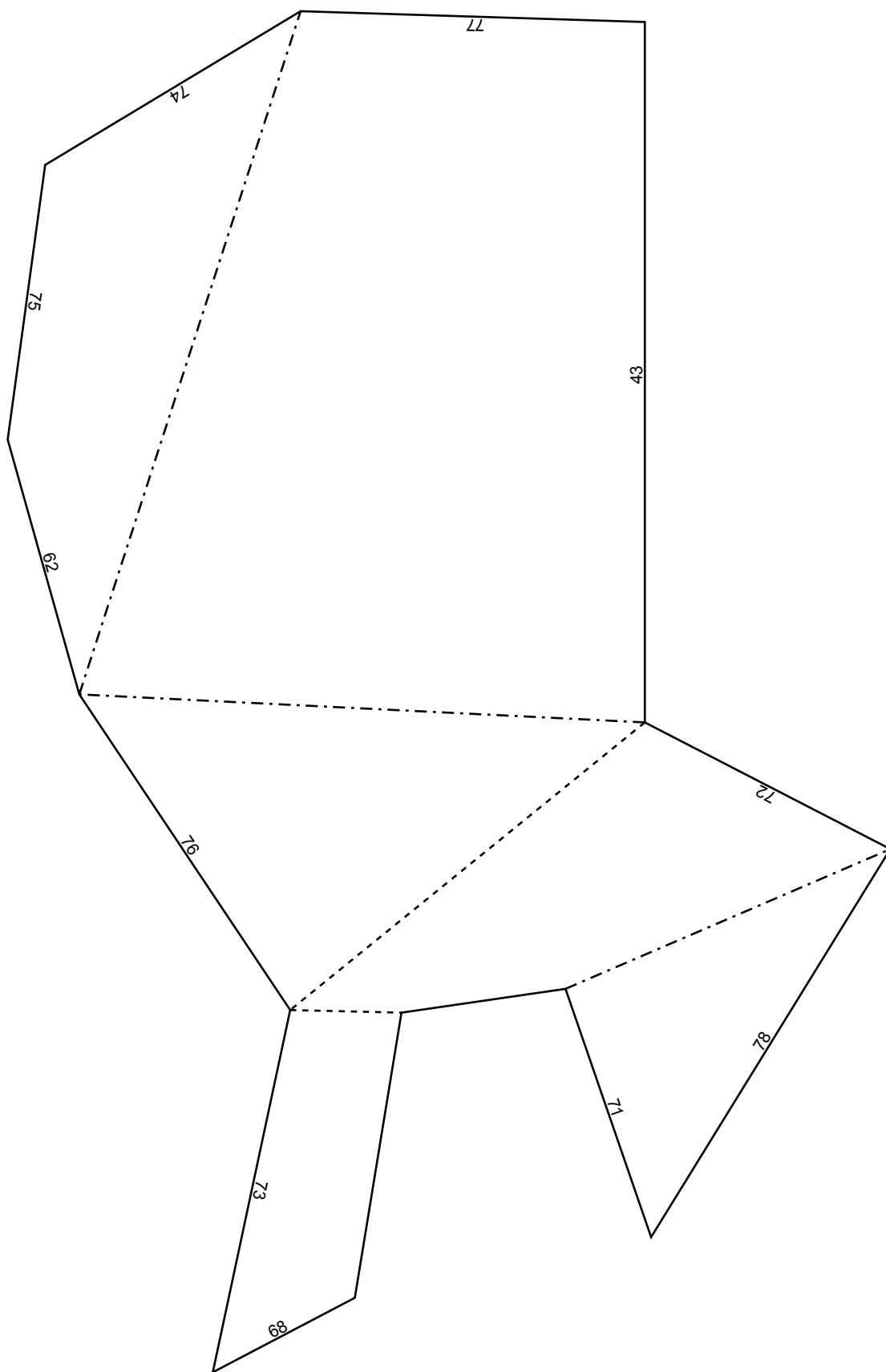


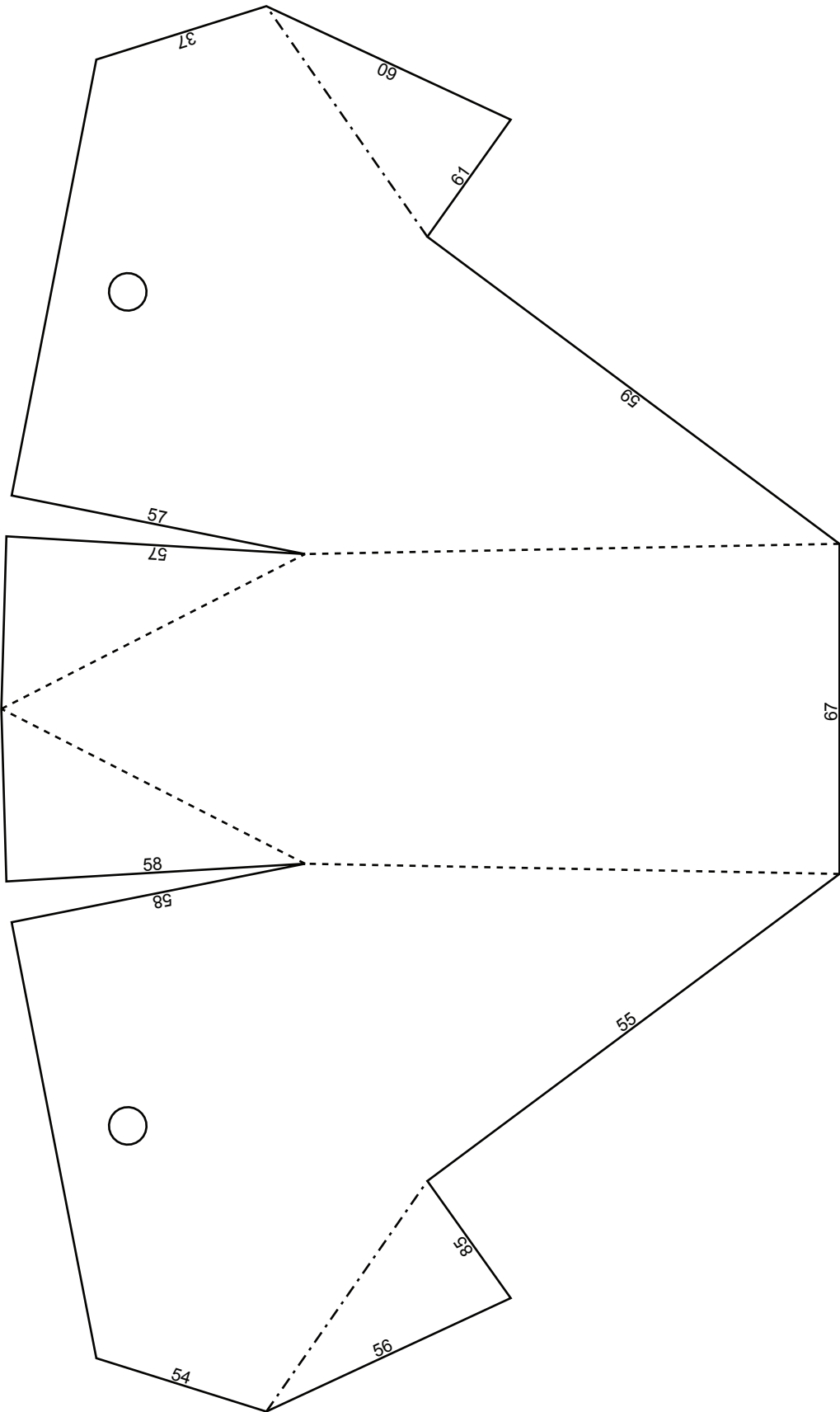
WINTERCROFT

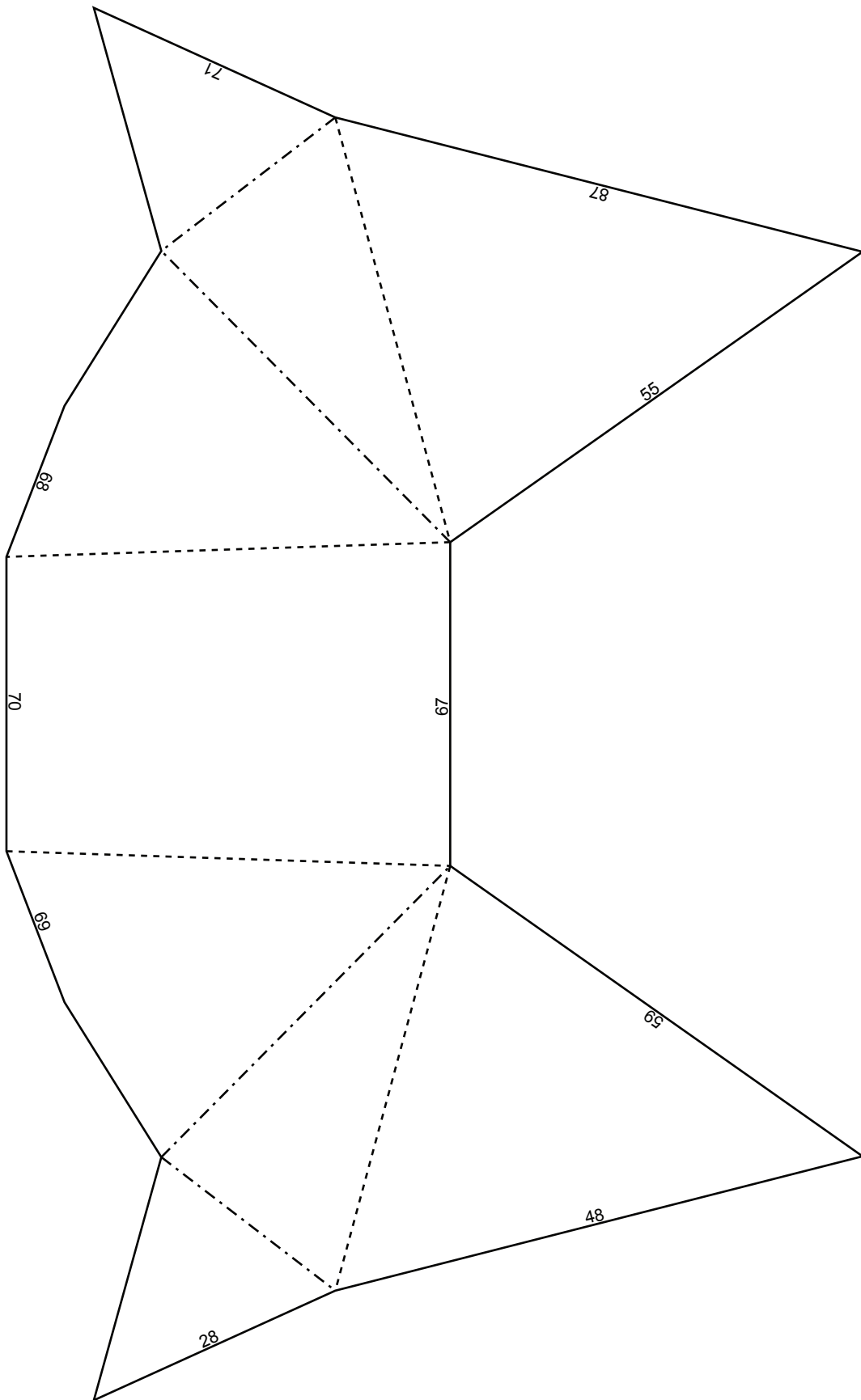
## Scale Guideline

To check the scale is correct, the line below should be 150mm from end to end.

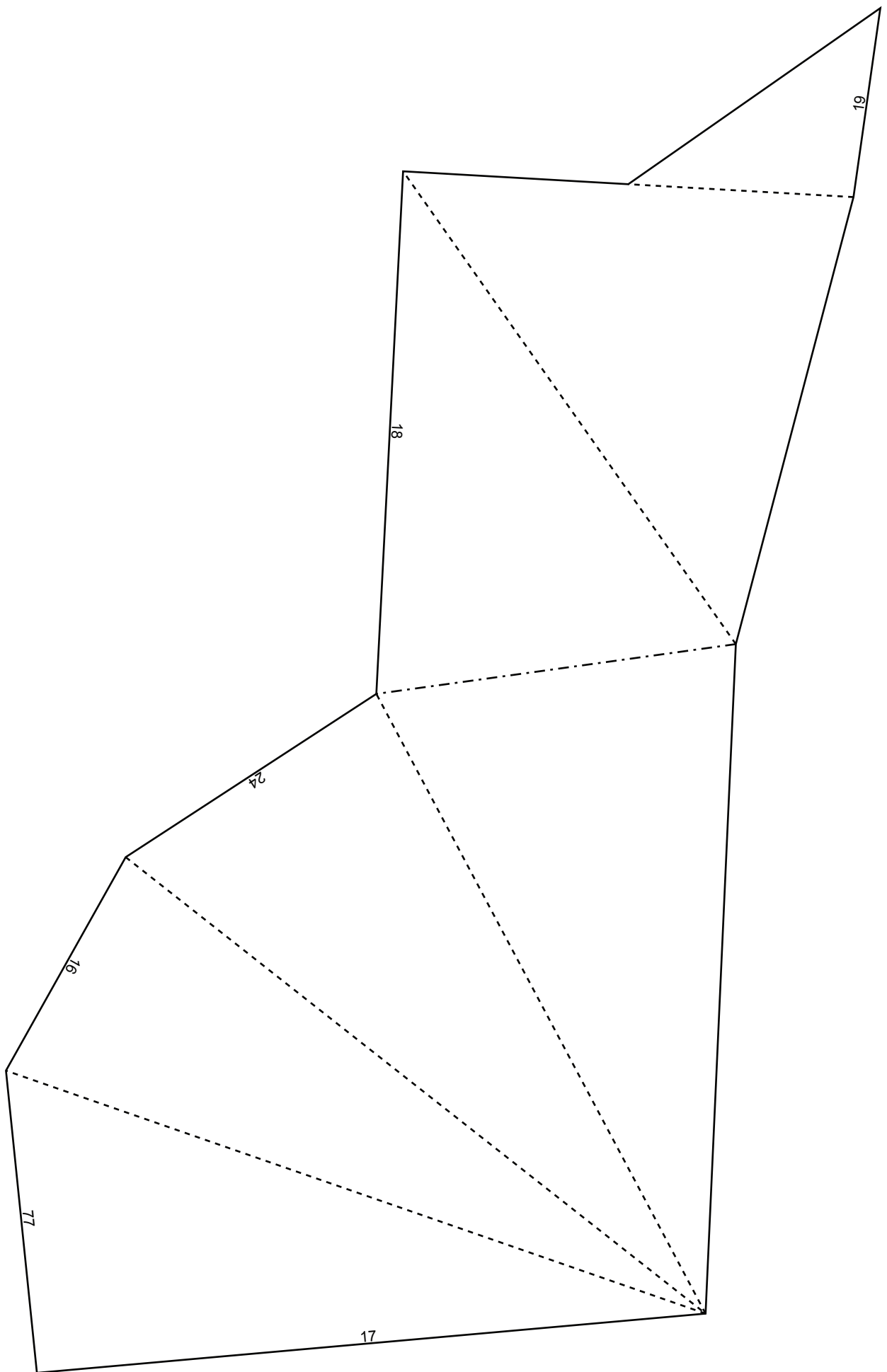


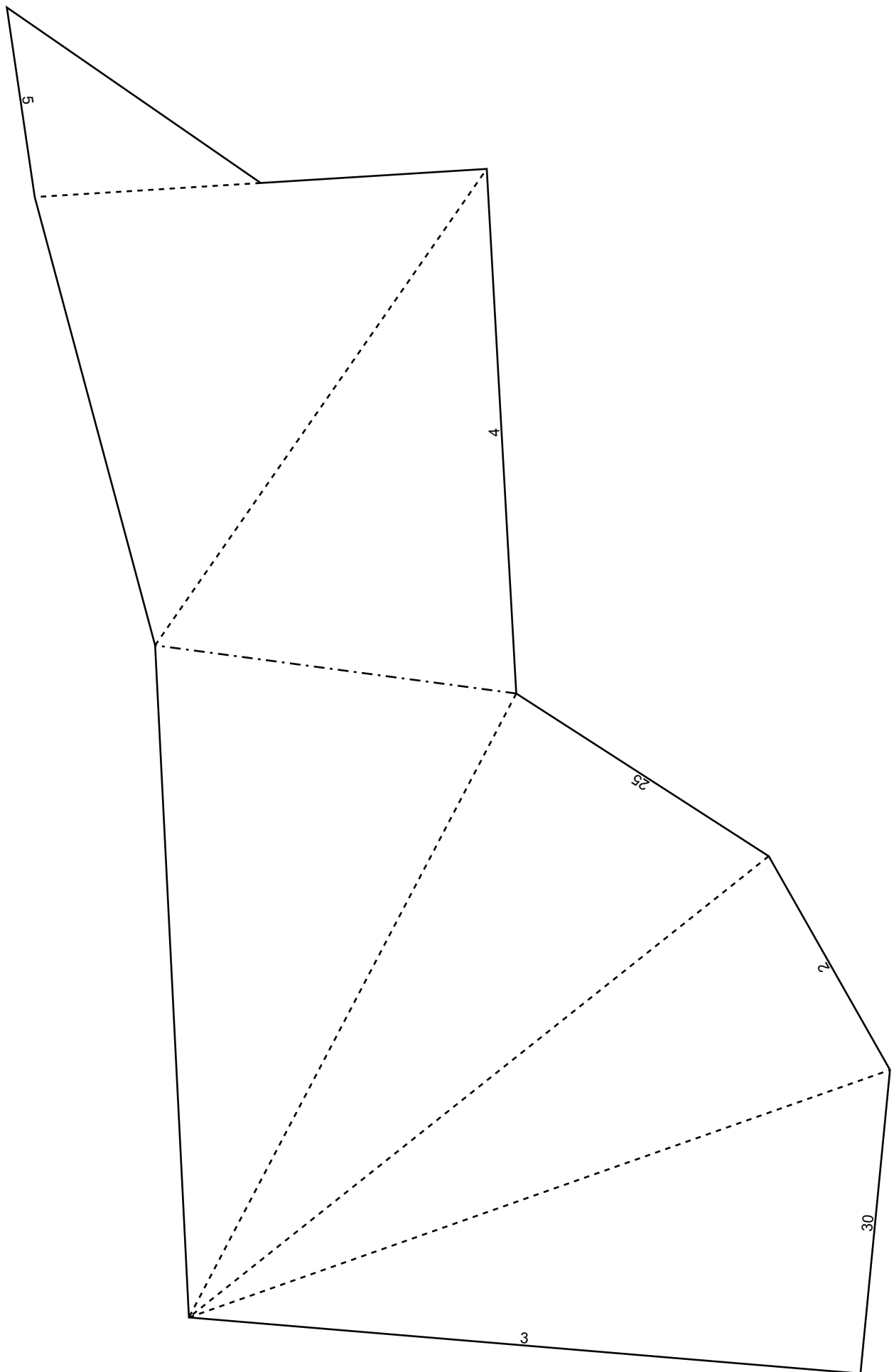


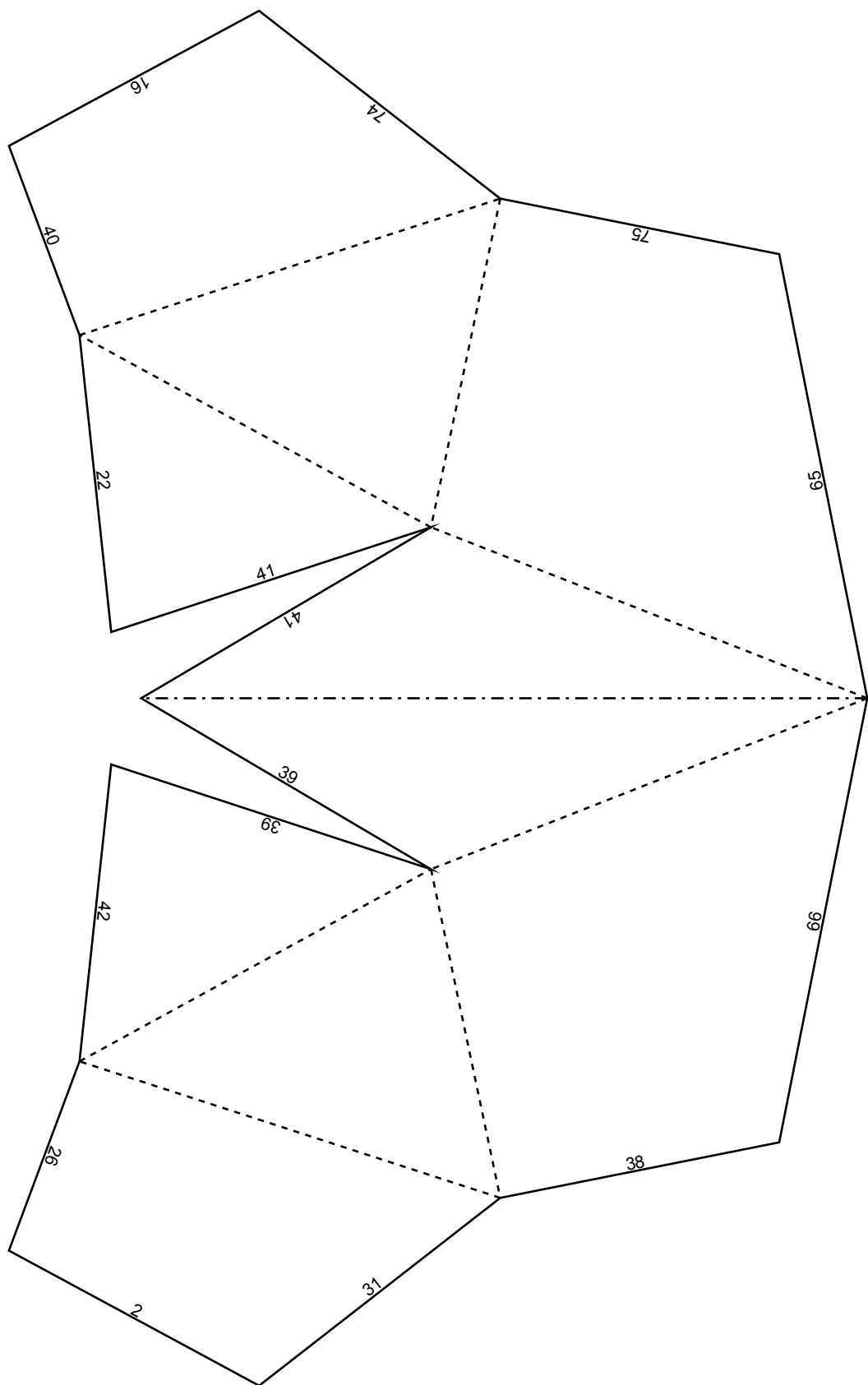




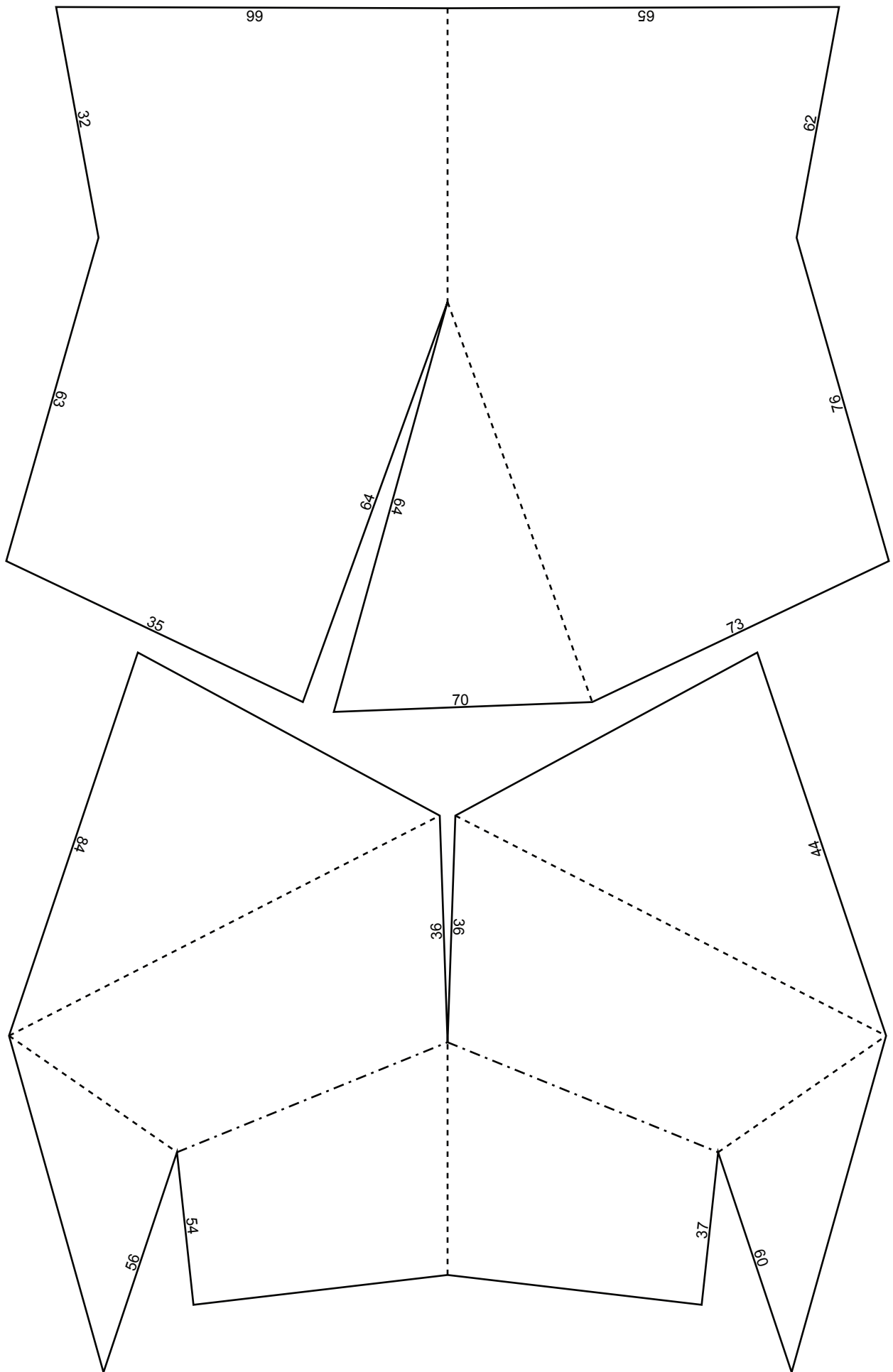


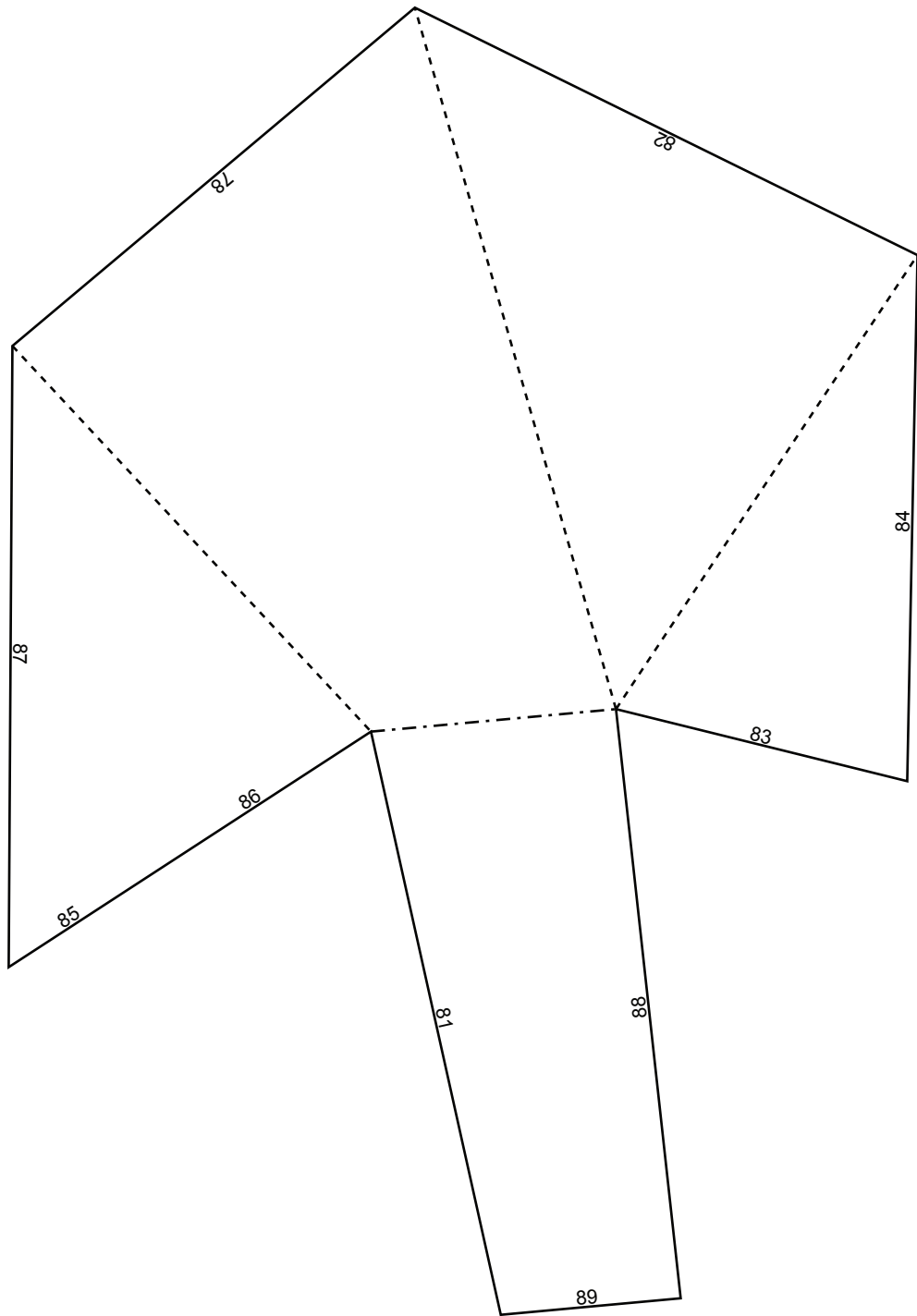


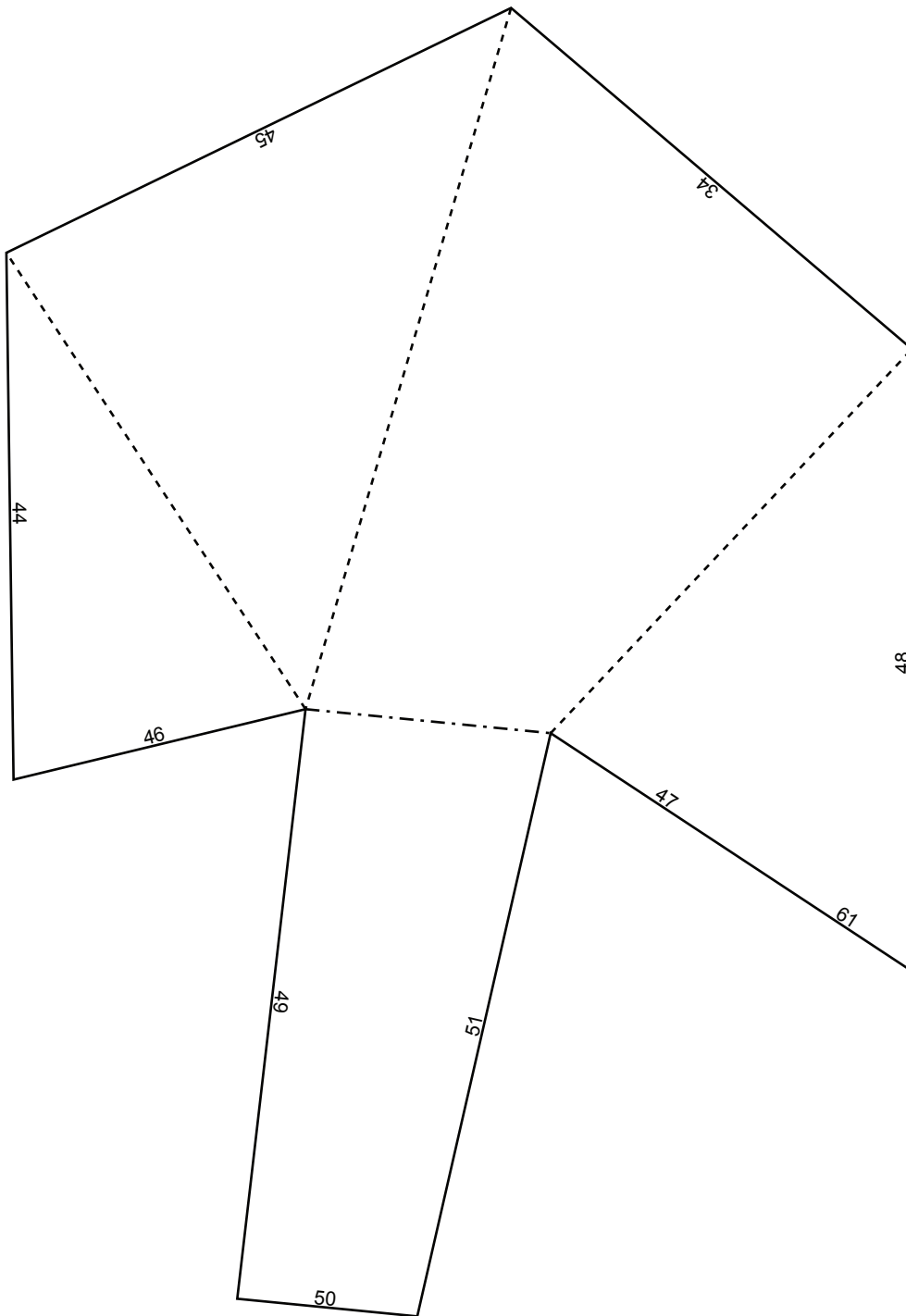


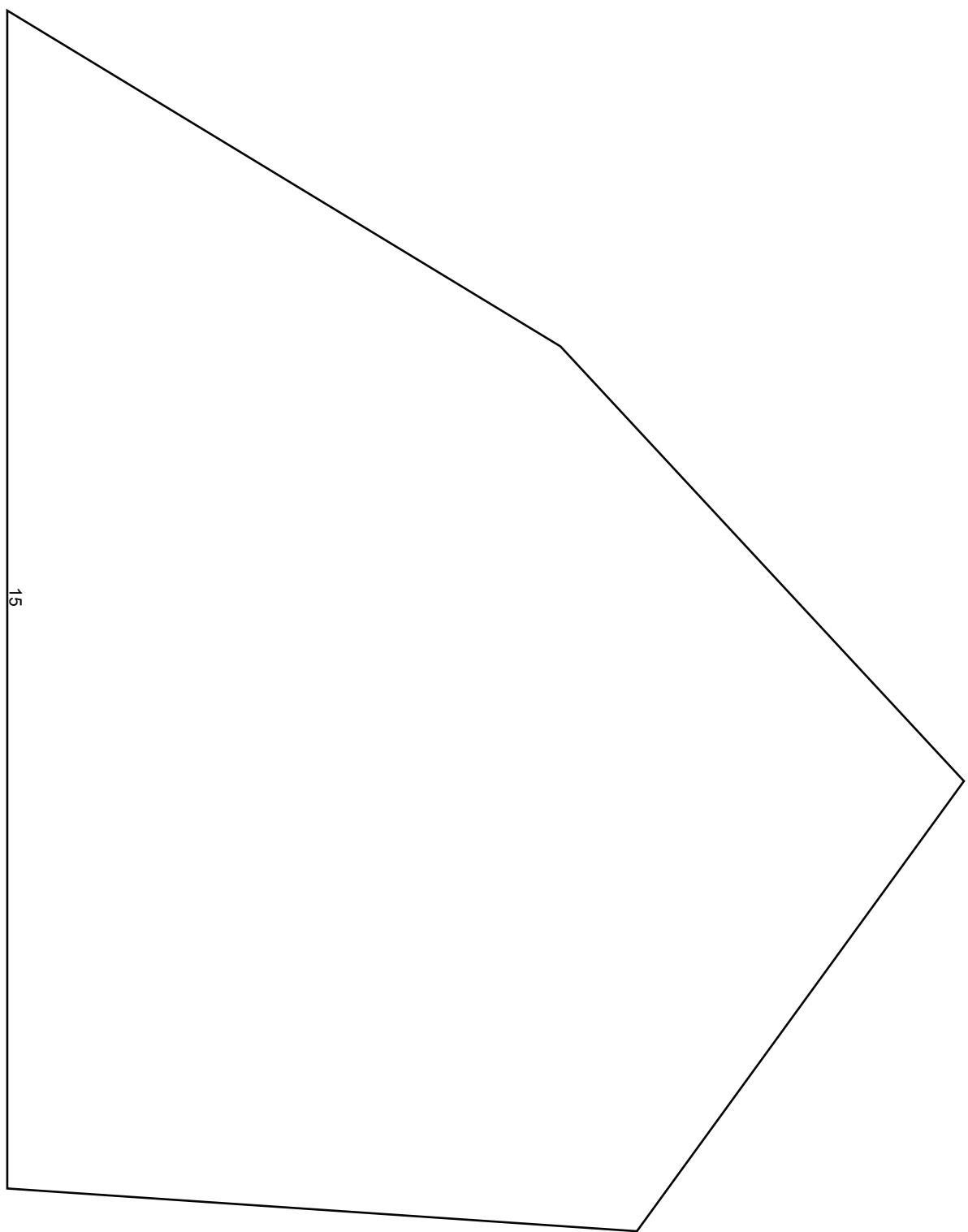




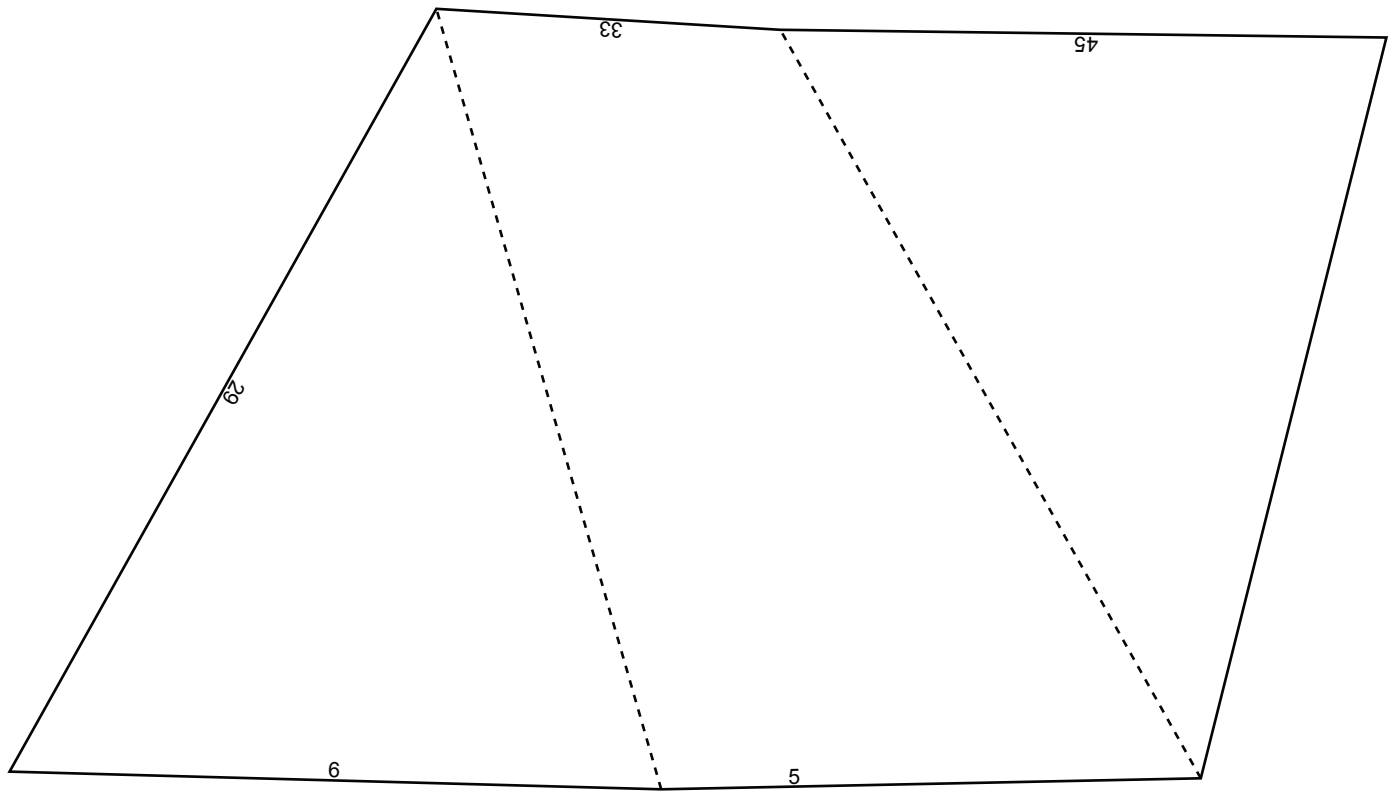
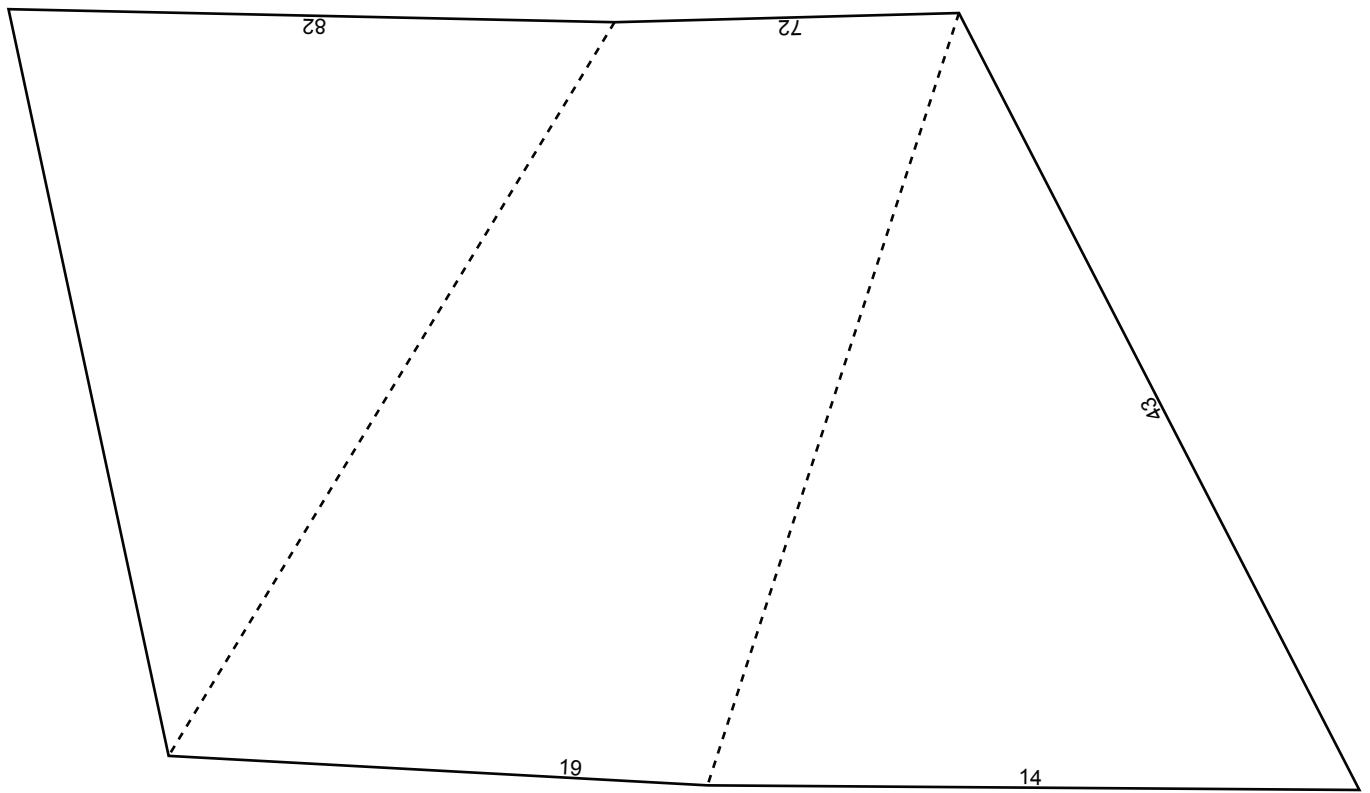


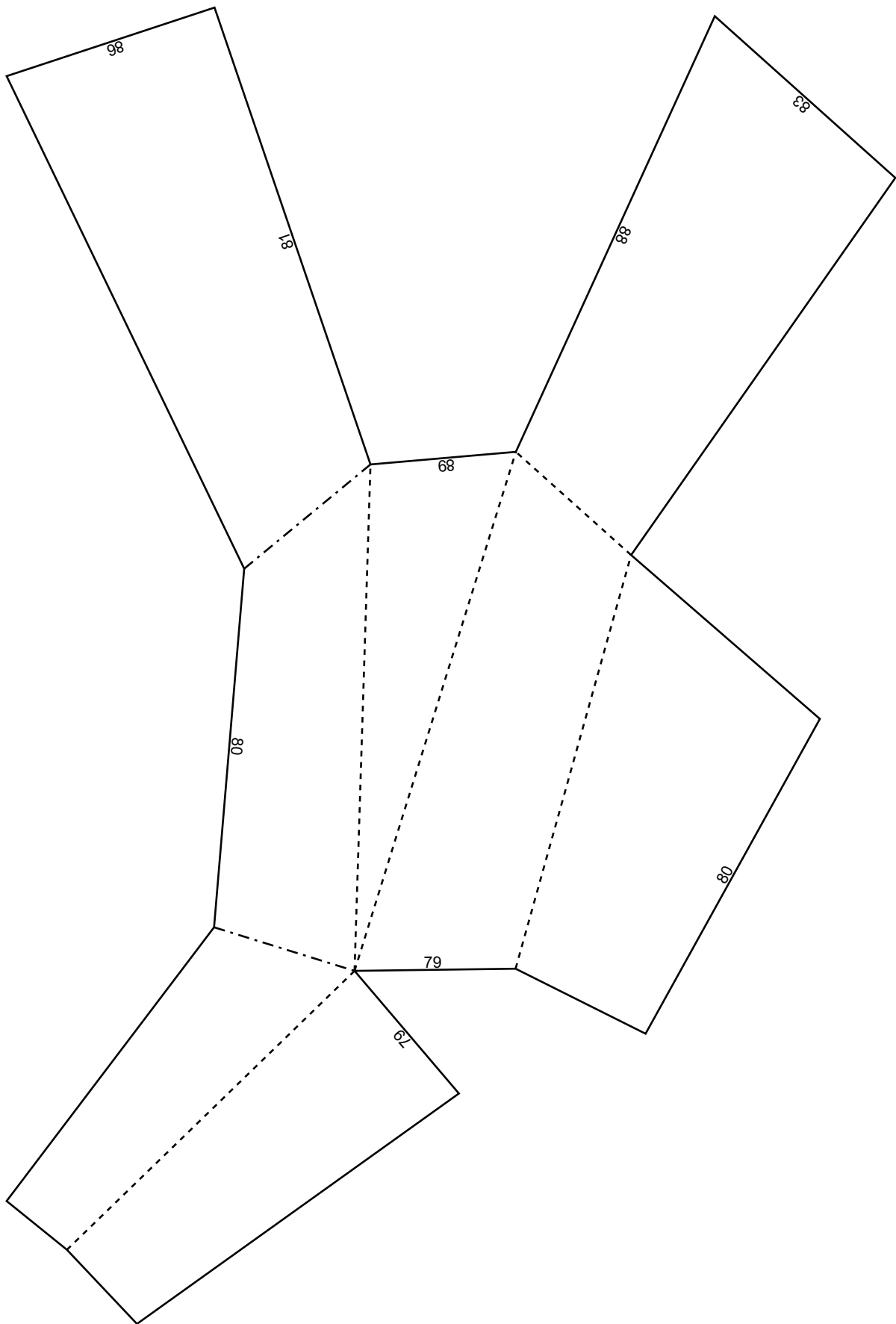


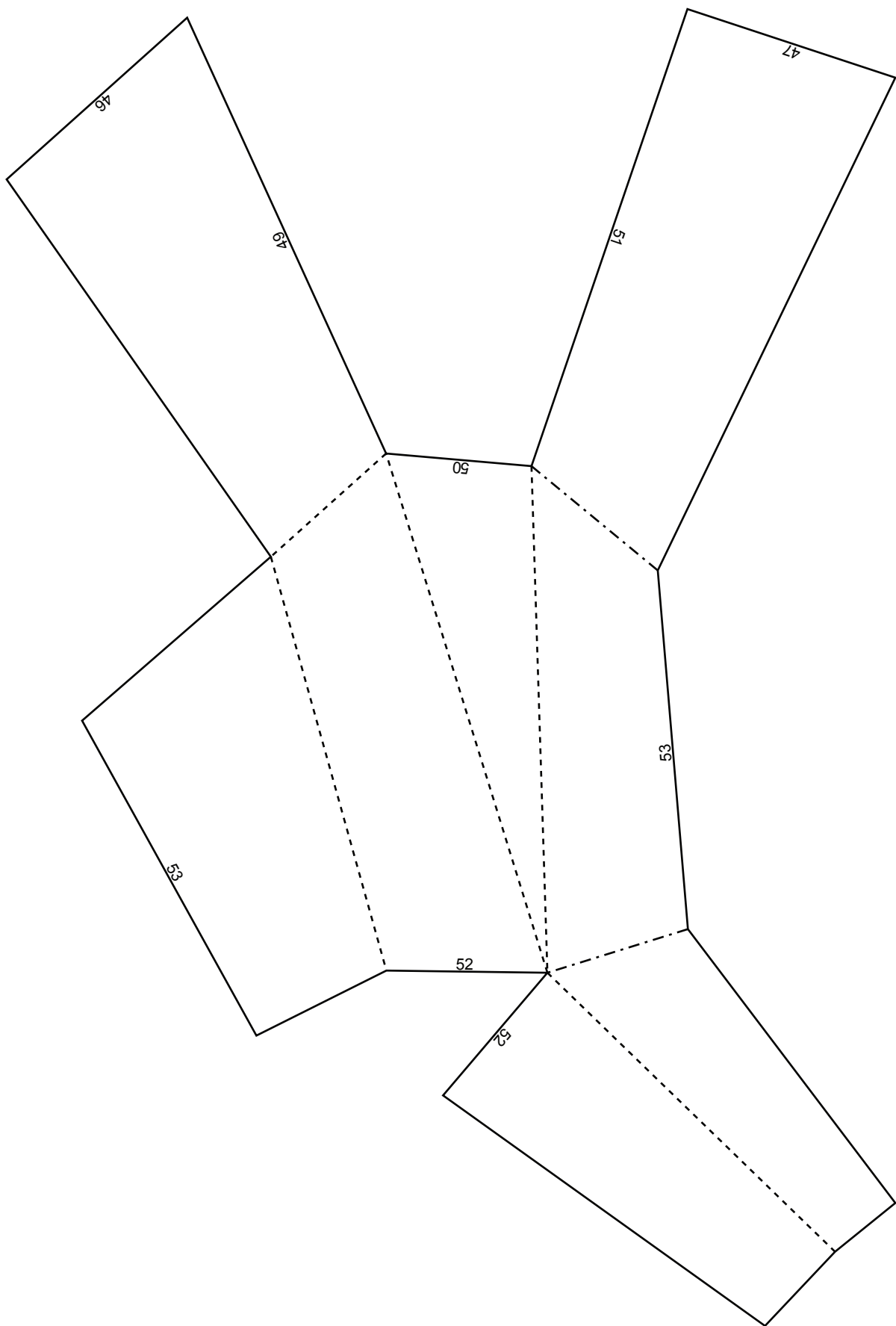


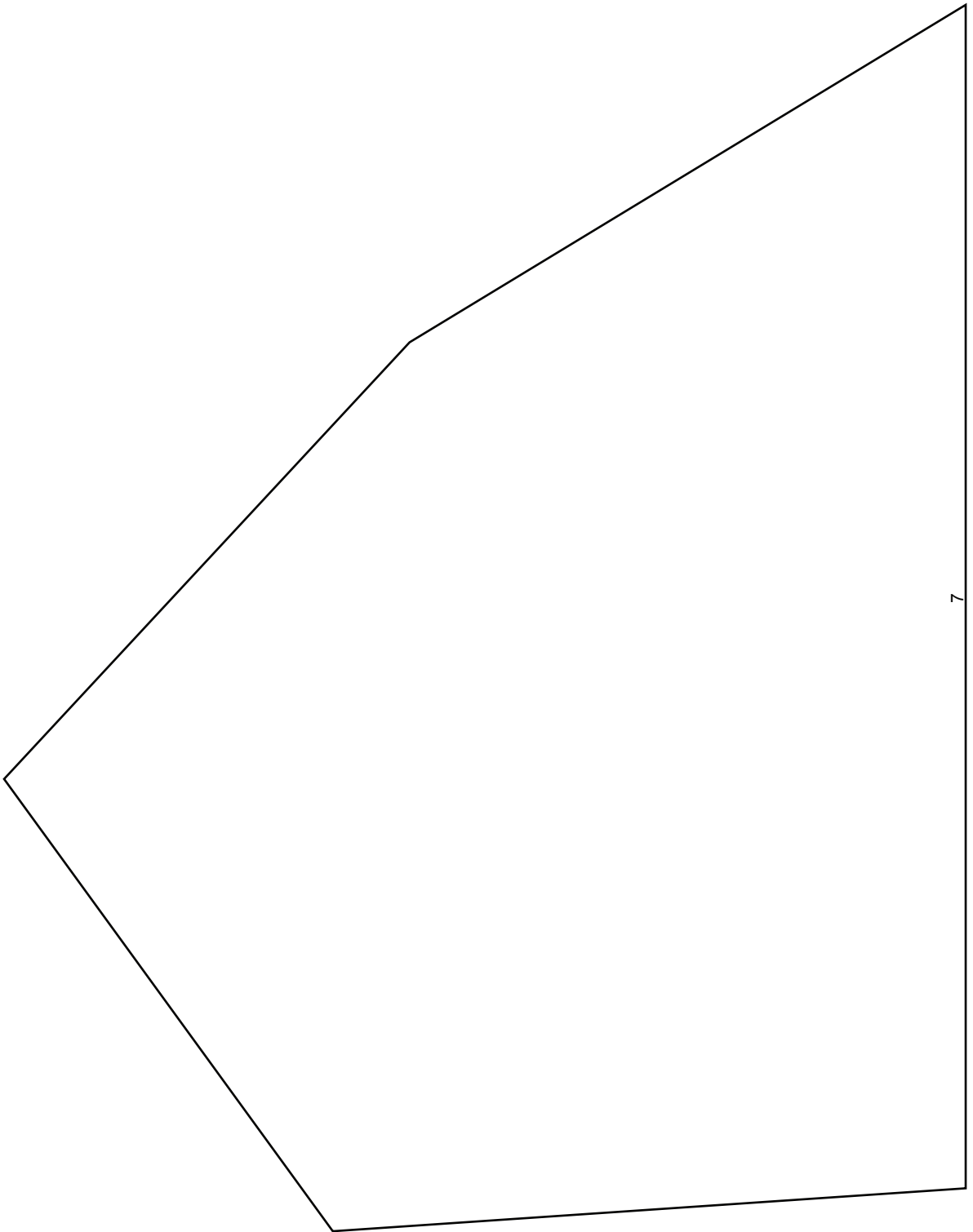


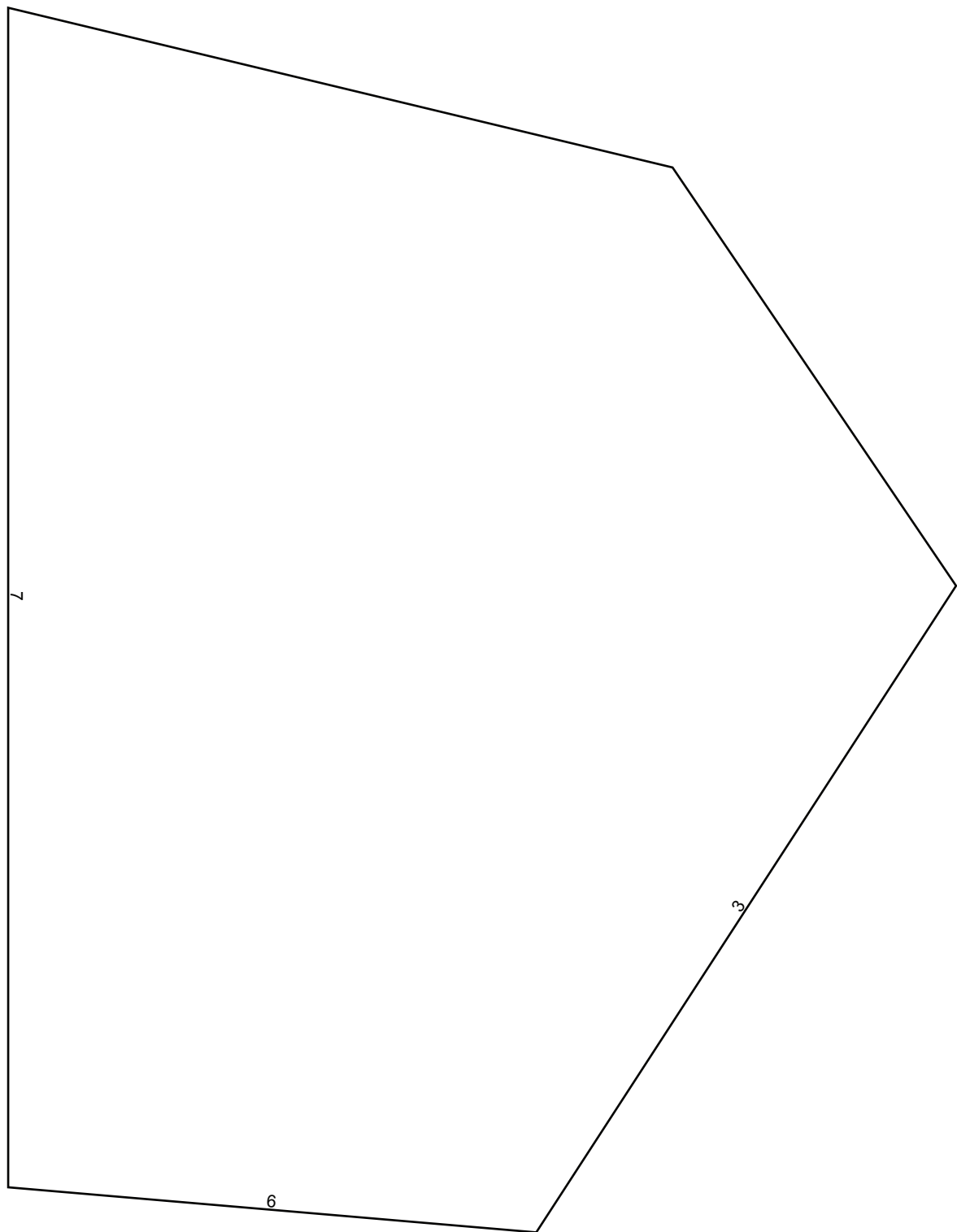


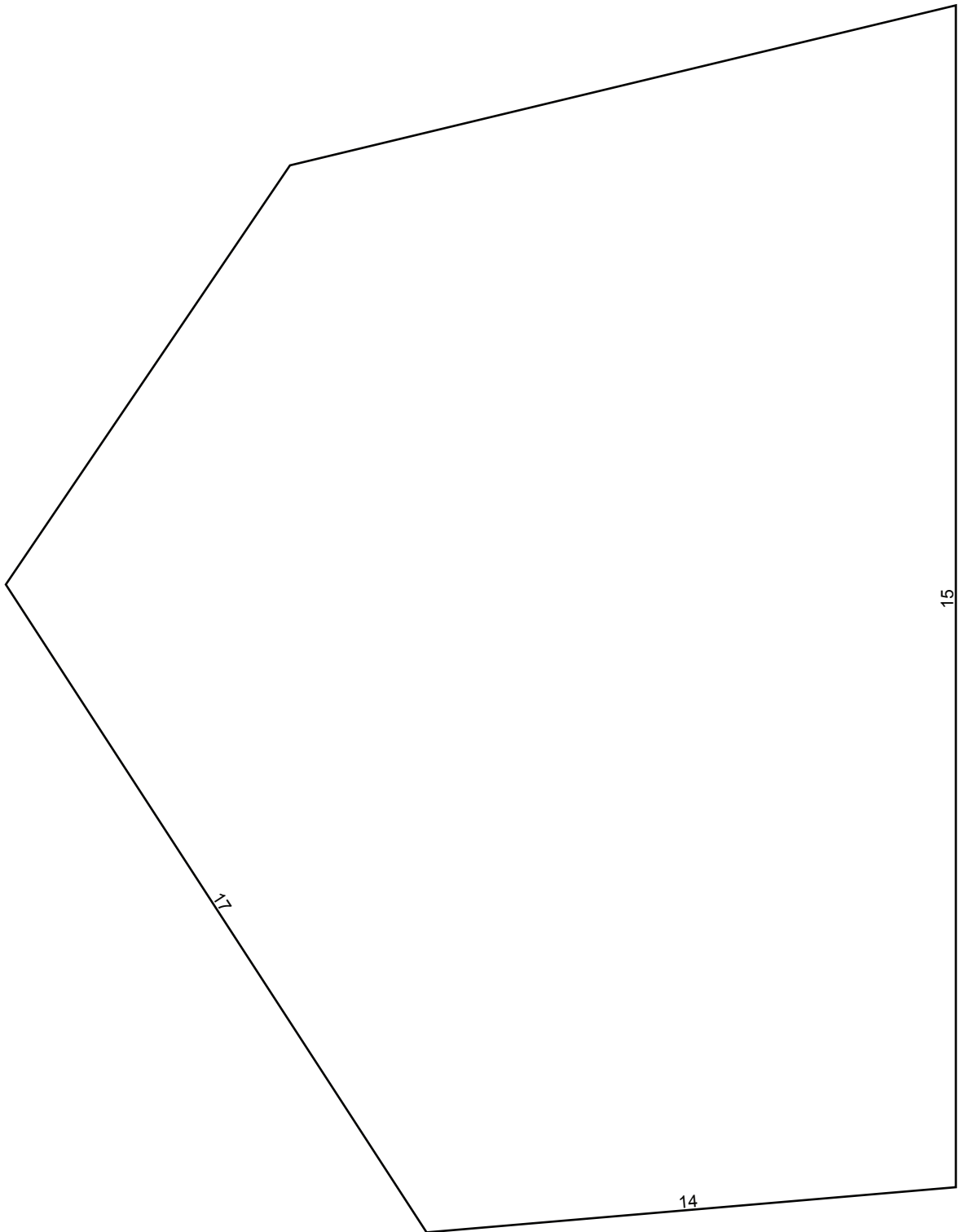


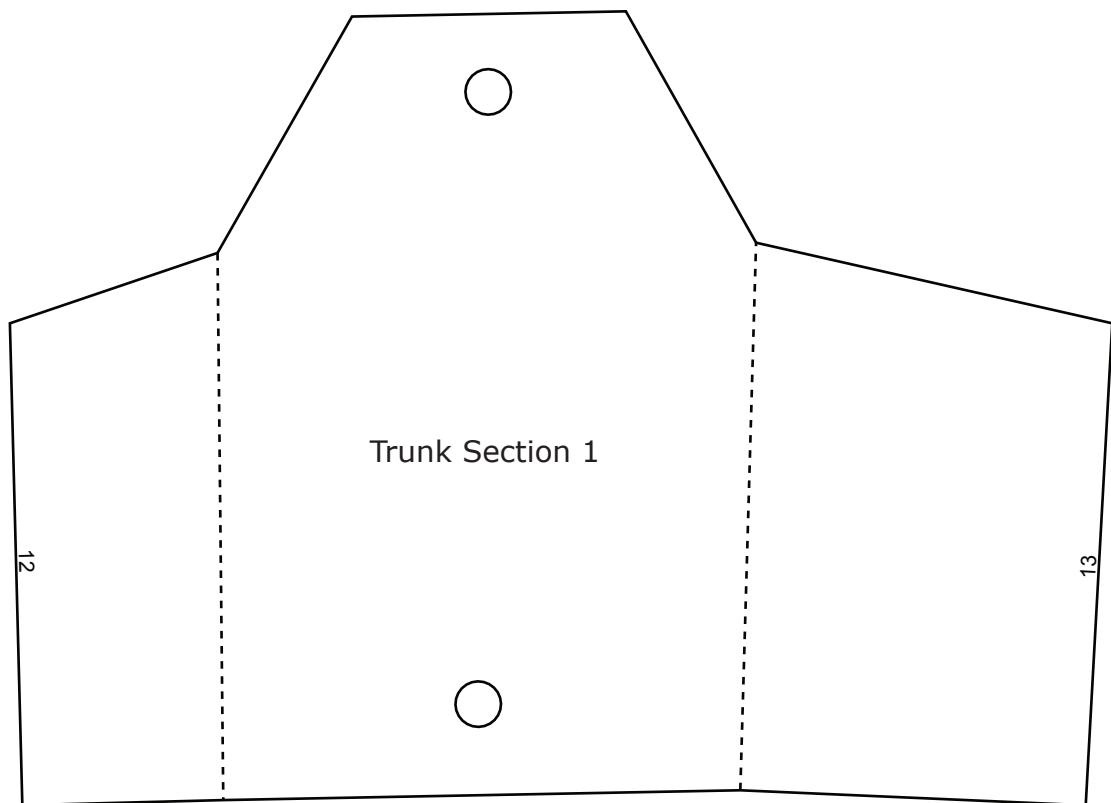
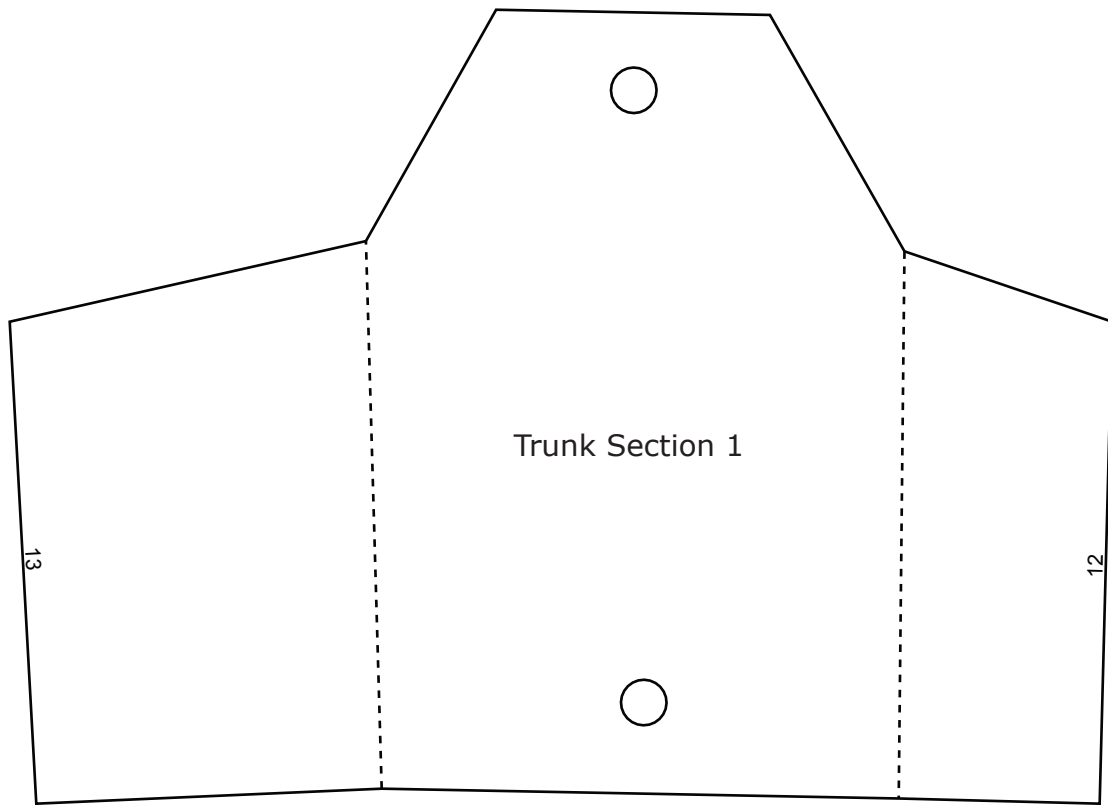


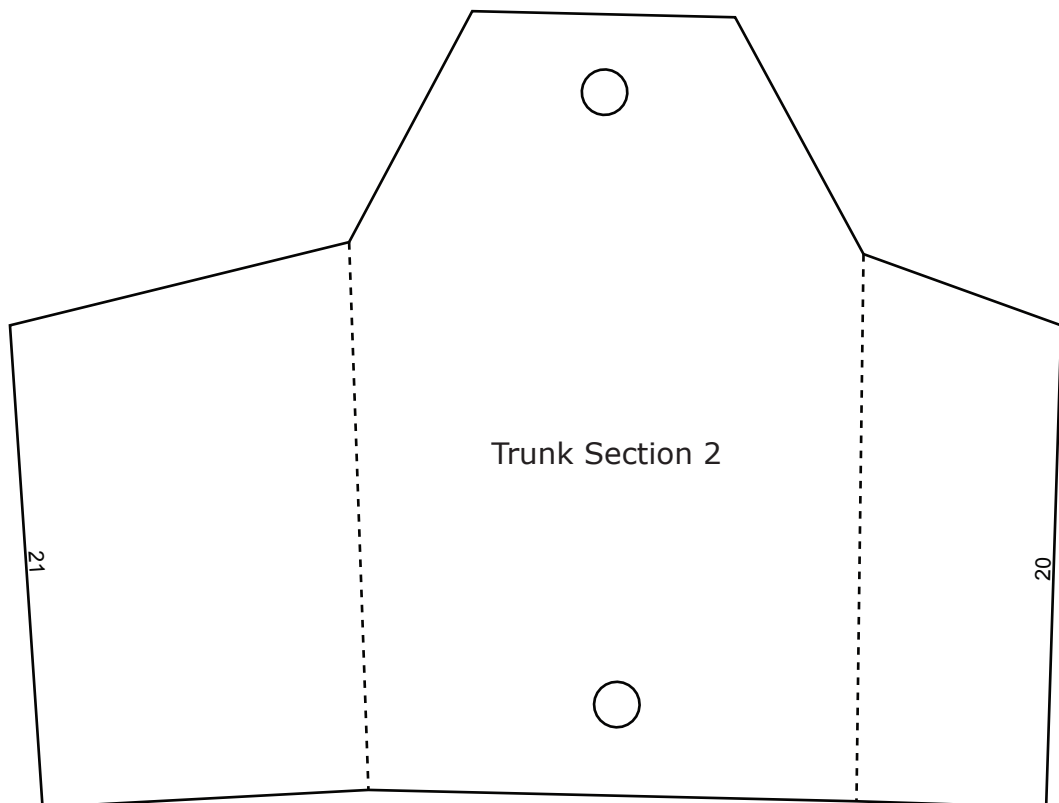
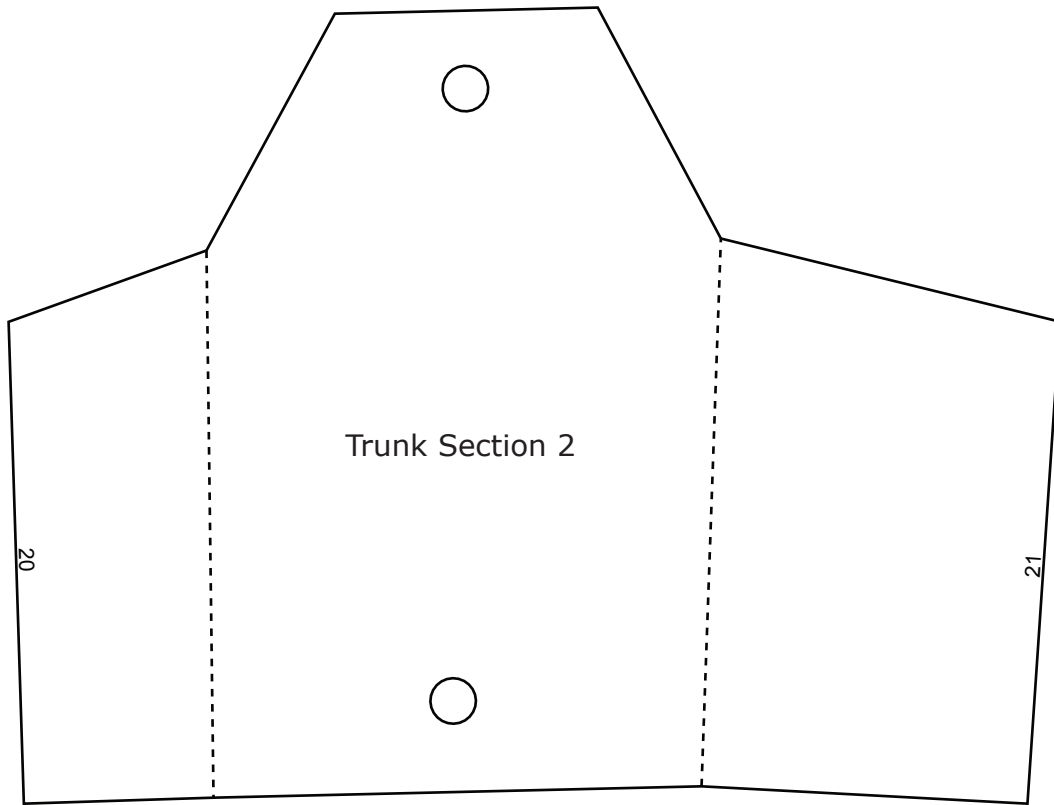




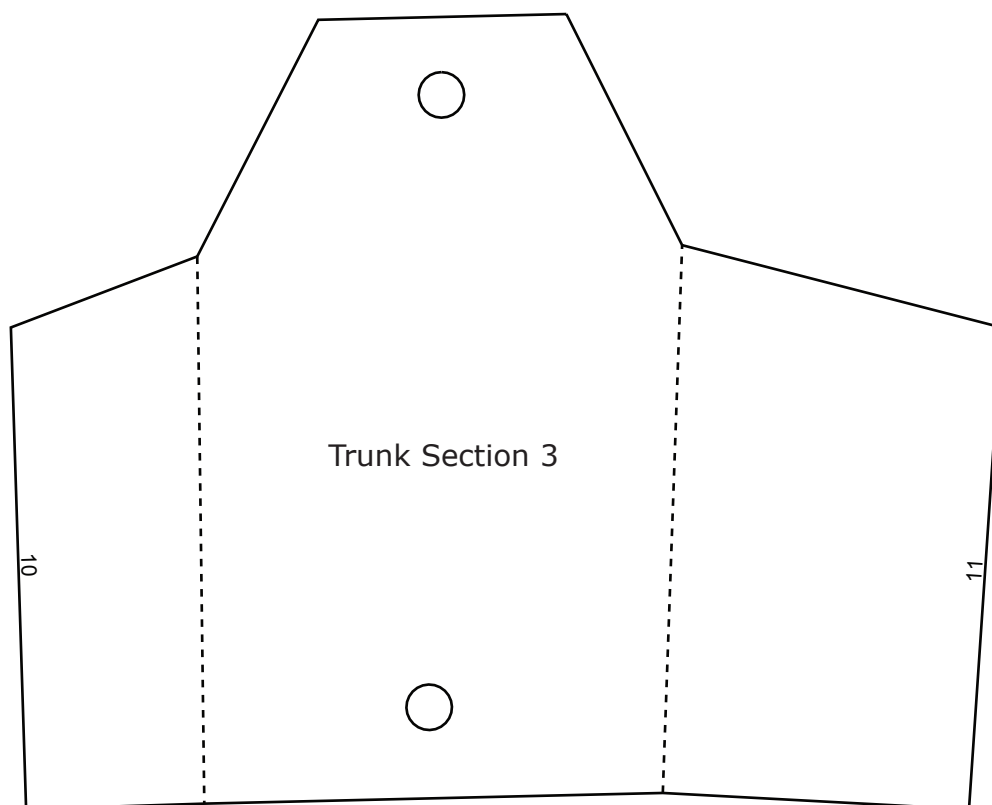
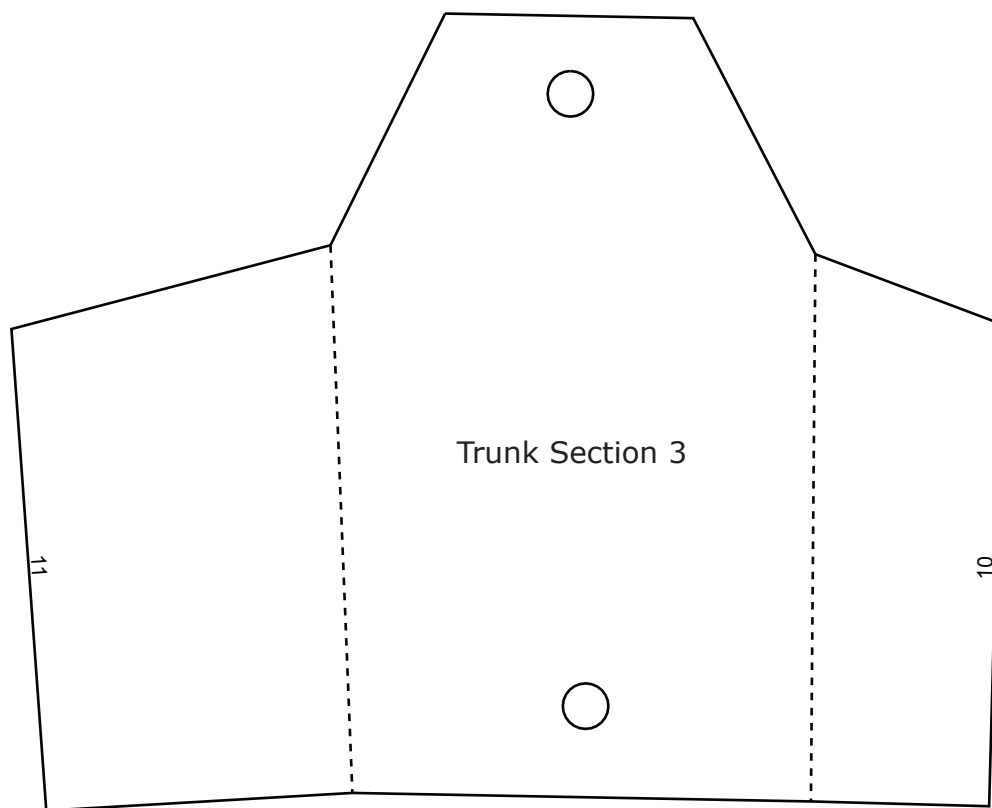


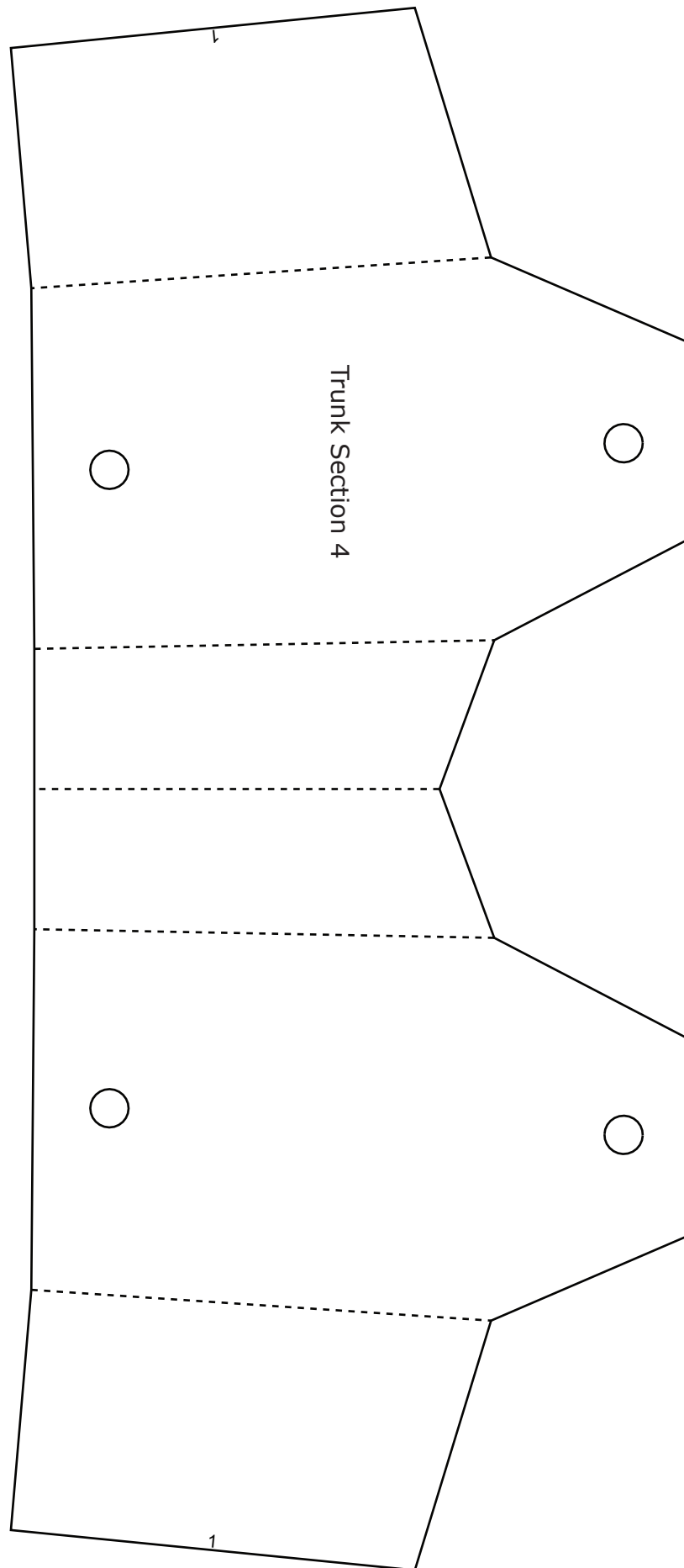


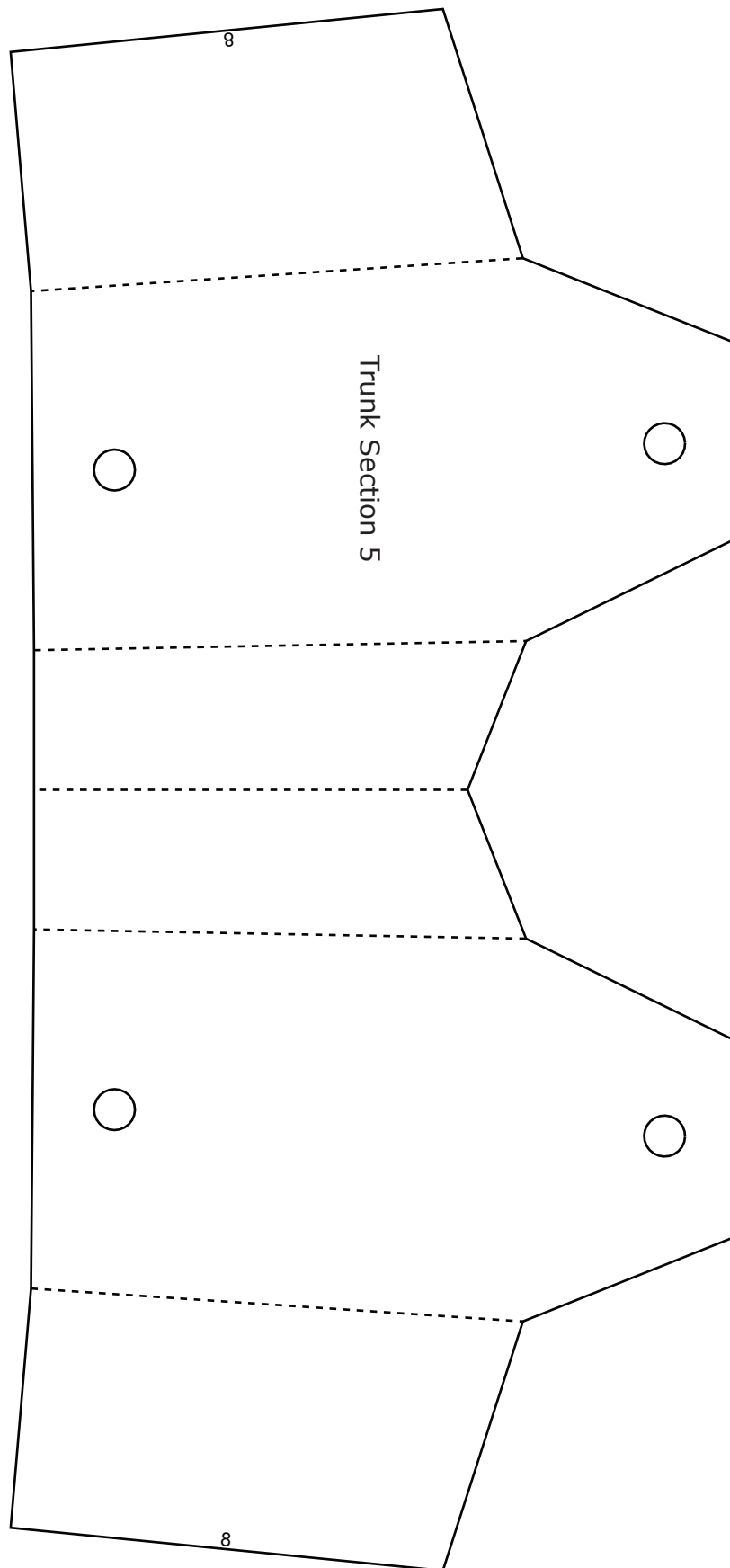


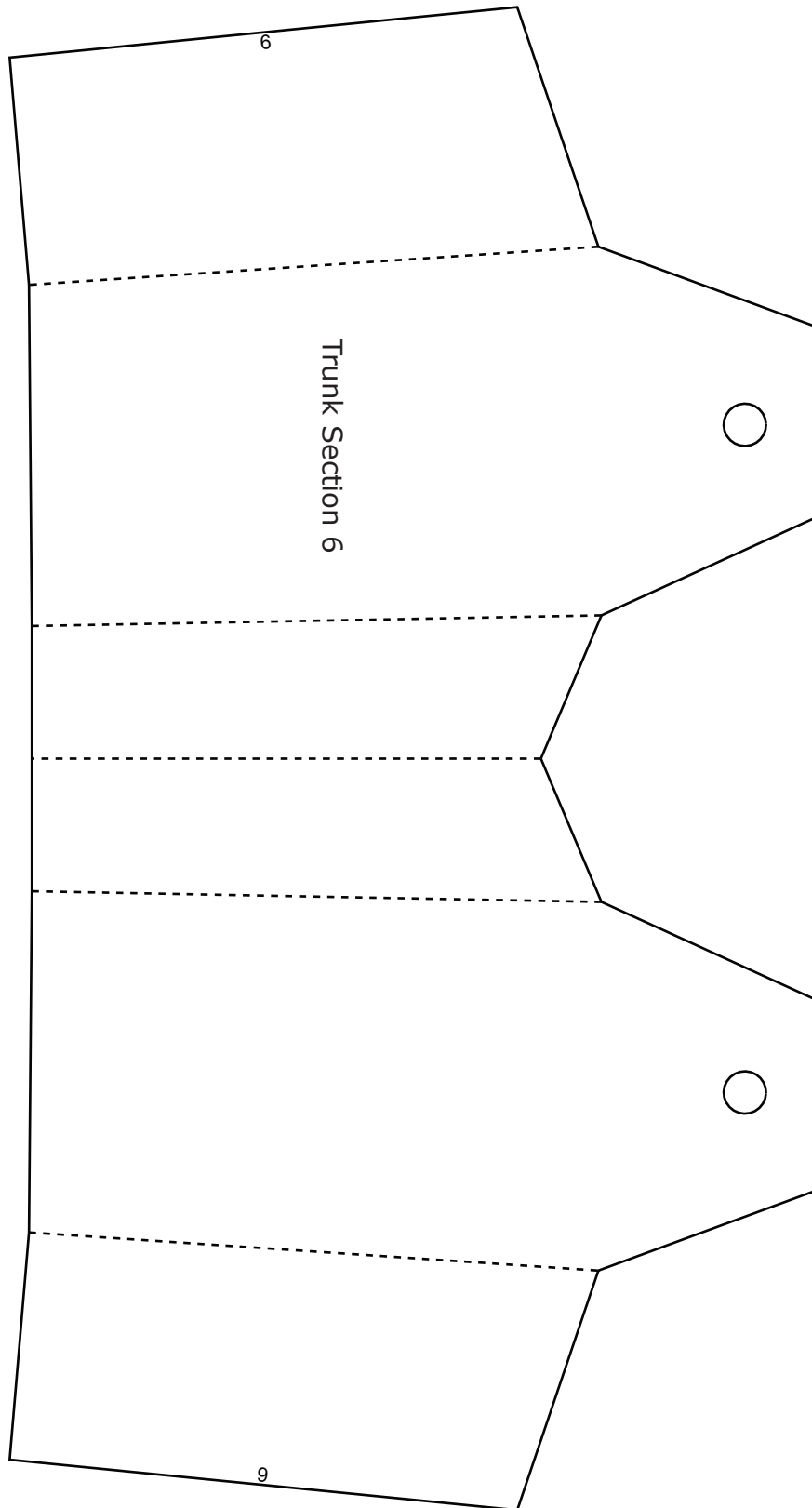














WINTERCROFT

# Head Band

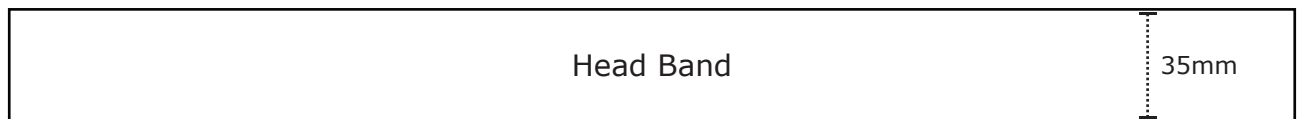
To ensure the completed mask fits well you can make a head band and fit it inside of the mask.

## Instructions for assembly

1. Cut two strips of card to roughly the dimensions below and the tape one end together.
2. Then wrap the band around your head and tape the other end to get a good fit. The band should be snug but not tight.
3. Take the band off your head and tape the tabs to the inside of the mask.
4. You might need to move the tabs around a little until you get it fitting right.

NOT TO SCALE

400mm



Cut two pieces of card at these dimensions

60mm

40mm

Tape to the inside of the mask here

Tape together here

Tape to the inside of the mask here

Tape together here

