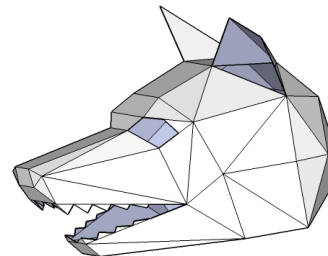


WOLF MASK

Designed by Steve Wintercroft
www.empiresurfboards.com



Materials

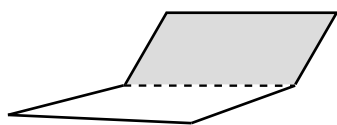
1. Thin card, the type used in cereal boxes is ideal. Thicker card like corrugated card will not bend to the detailed folds. The approximate area of flat card that you need is around three large cereal boxes or a sheet and a half of A2 card.
2. Spray mount, Pritt stick, PVA or something that will stick paper to card.
3. Scissors or a craft knife.
4. Straight forward sticky tape, you can use basic cheap tape but I've found that Scotch Magic invisible tape gives a neater finish.
6. Some spare time, approximately 2 to 3 hours

Printing instructions

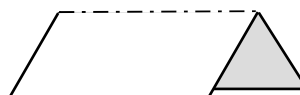
The templates are intended to be printed at full size on A4 paper 210mm x 297mm. Please check your print setting to make sure that they will be printed at the correct size. I have included a 150mm line on the first page of the templates so that you can check the scale. The line should measure 150mm after printing but plus or minus 2mm is acceptable.

Instructions for Assembly

1. Having printed the templates on A4 paper, trim them roughly to the approximate size, they don't have to be neat. Trimming off the excess paper makes it easier to arrange the templates on the card.
2. Unfold your boxes so that you have flat sheets of card to work with, then glue the templates to the card. When you assemble your mask your templates will be on the inside faces of the mask. First choice for glueing the templates would be spray mount. It's available from most art shops but can be expensive. Pritt Stick is a cheaper alternative and also works really well.
3. Cut out the templates along the solid outlines. Cut the solid outlines only, not the dashes.
4. The fold lines on the templates are marked as either a dashed line representing a valley fold or dashes with dots to represent a mountain fold. This is with the templates on the inside of the mask.



Dashed line
represents a valley fold



Dashed line with dots
represents a mountain fold

5. Score all of the valley folds marked on templates with either a blunt knife or scissors. Then find the parts with mountain folds, flip them over and score them on the reverse side. Score and fold all of your parts.
6. Start matching up the numbers on the templates and tape together the edges with corresponding numbers. Taping on the outside makes things easier for most parts but if you come to a part that is difficult to tape outside, try taping inside the mask. If a join feels like it is under stress, tape it inside and out to reinforce it.
7. Once you have built your mask, make the head band following the instructions on the final page and tape it to the inside of the mask. You might need to adjust the band forward or back to get the best fit.

If you run in to any problems or have any questions please just ask.

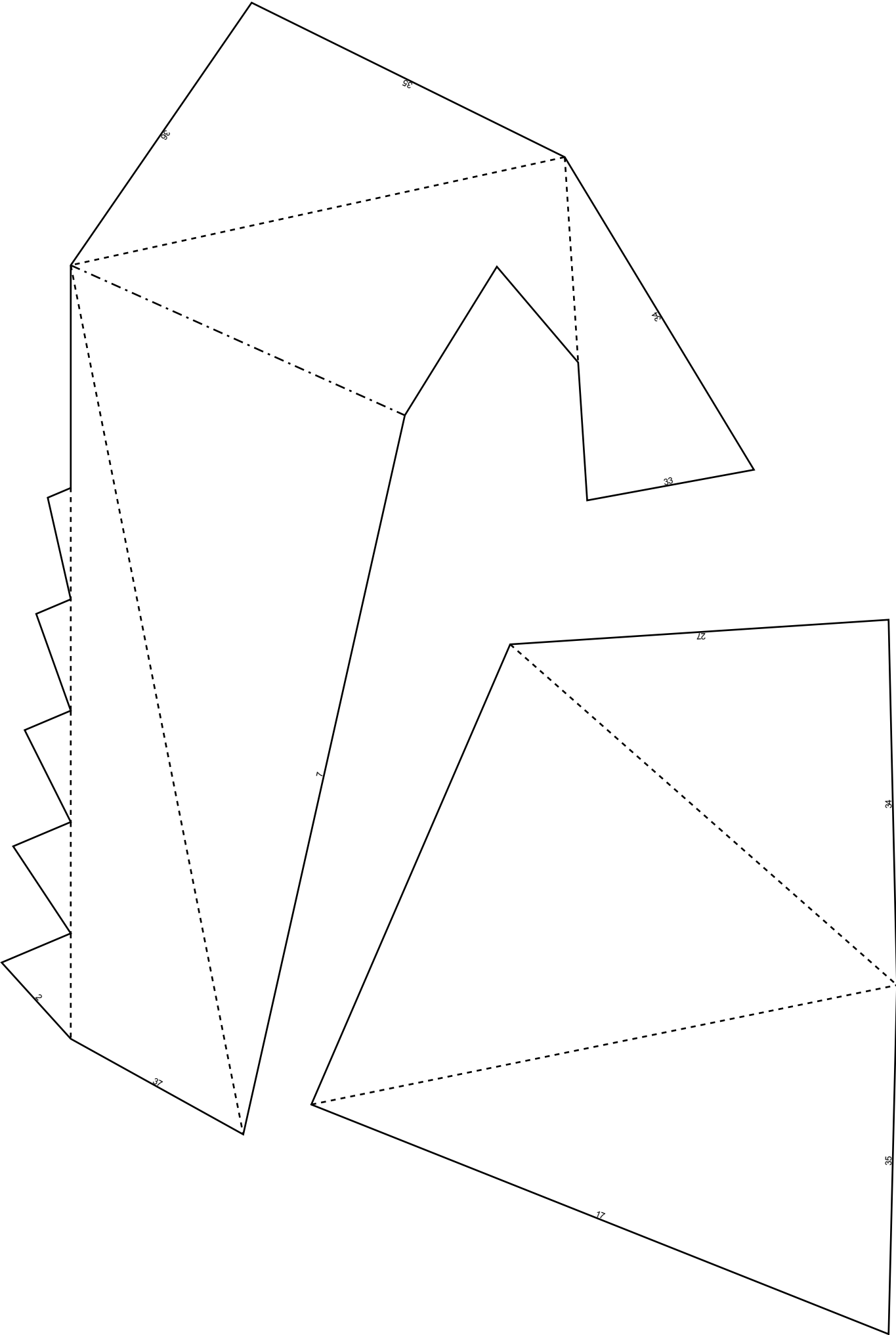
These designs are copyright and are intended for your own personal use only. Use this file to make as many masks as you like for yourself but please don't share or steal the templates, there was a lot of work involved in creating them. If you want to use them for any other reason then please get in touch.

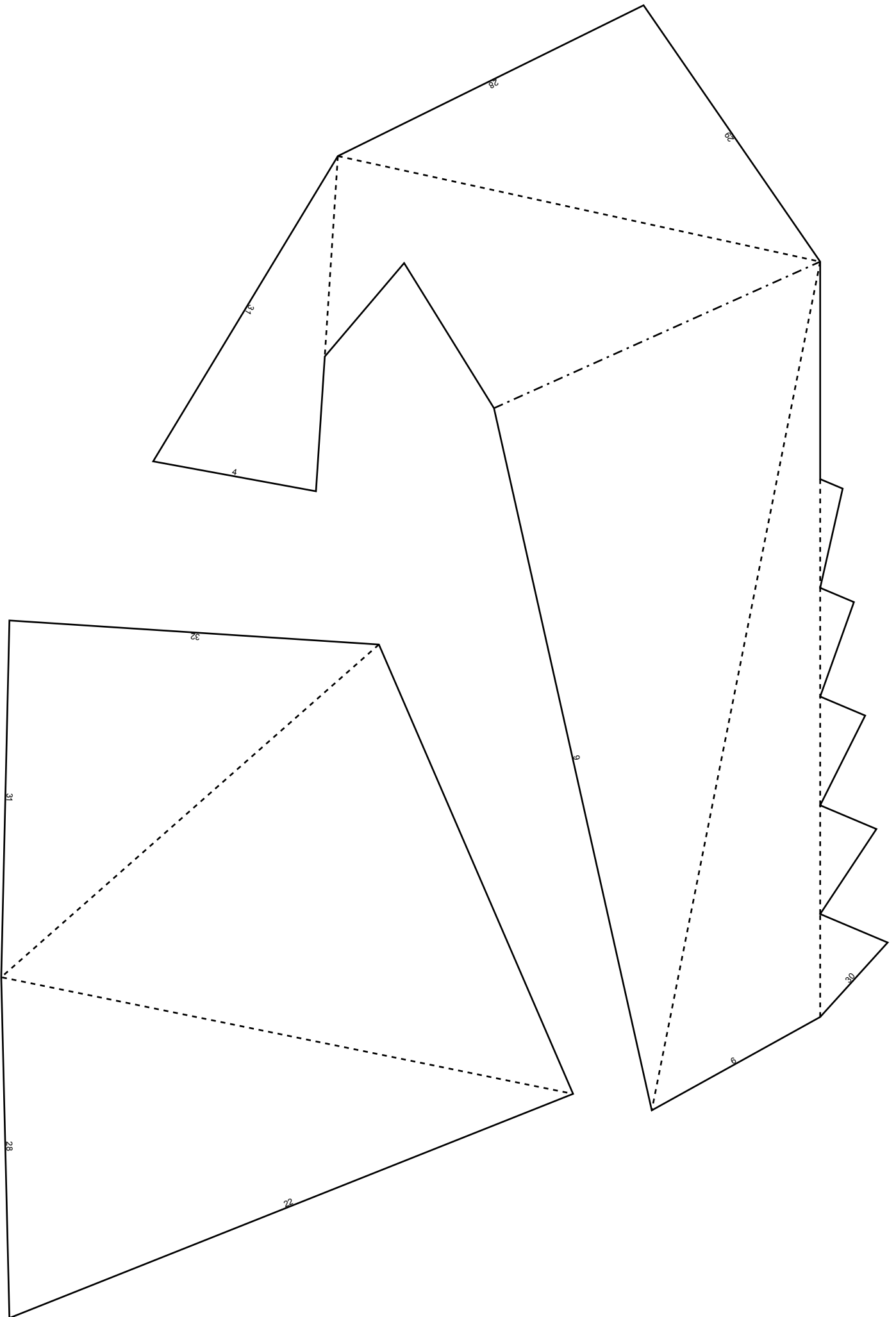
THESE MASKS ARE A PERSONAL CRAFT PROJECT, PLEASE DO NOT USE THEM FOR PROFIT

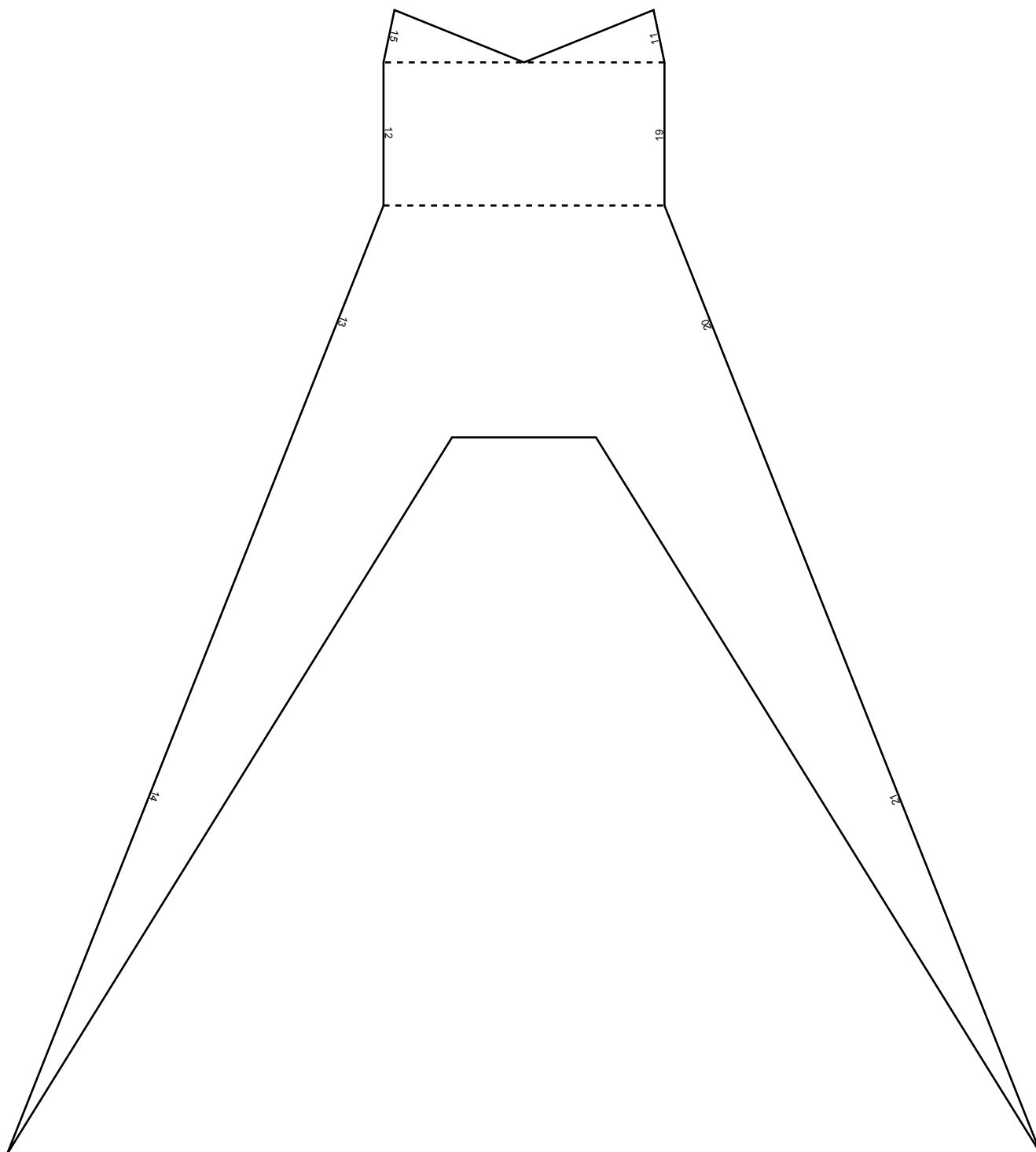
I would love to see your finished creations, you can e-mail photos to twofins@gmail.com or post them on my facebook page <https://www.facebook.com/wintercroftmasks>

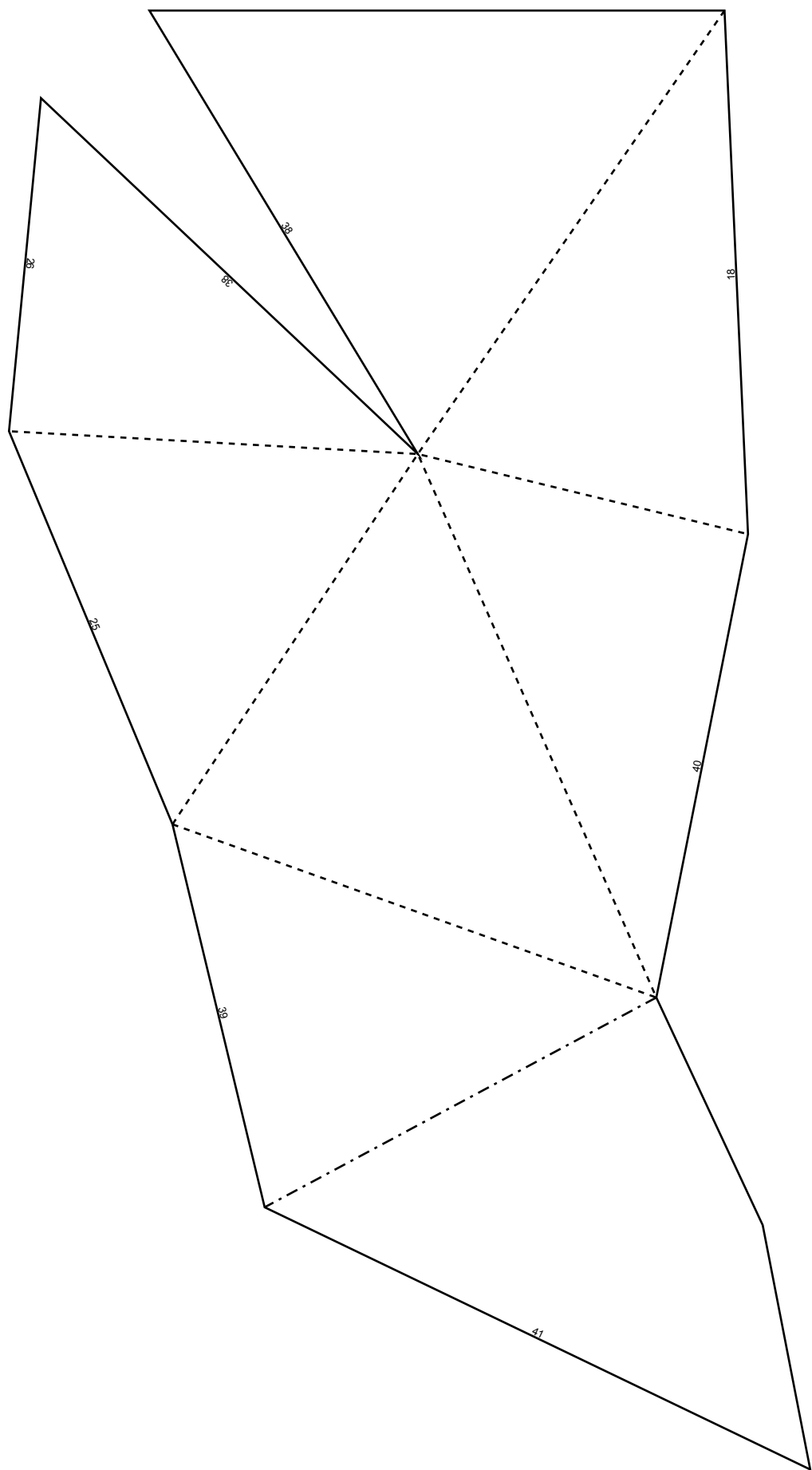
Many thanks and have fun,
Steve

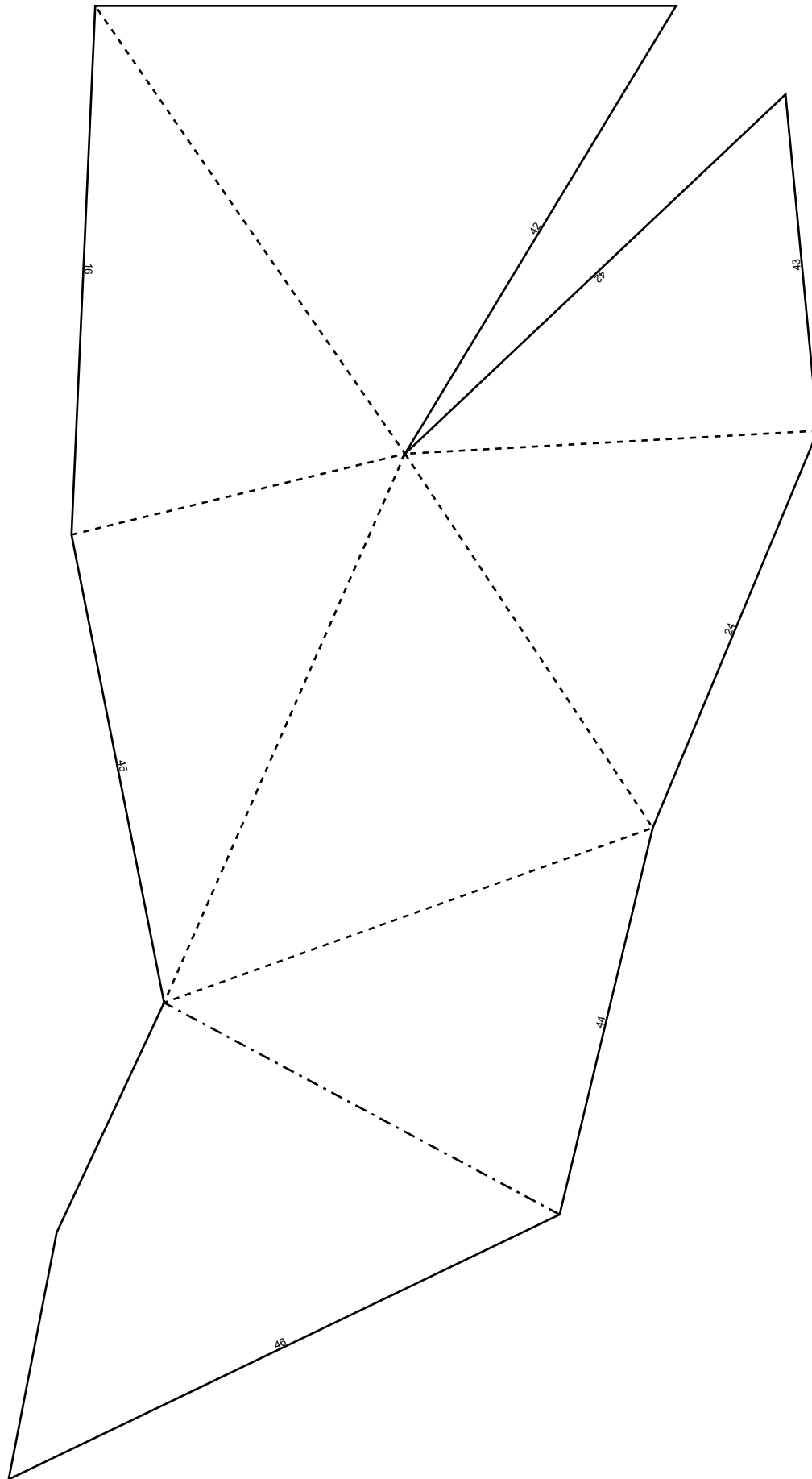
To check the scale, the line above should be 150mm from end to end

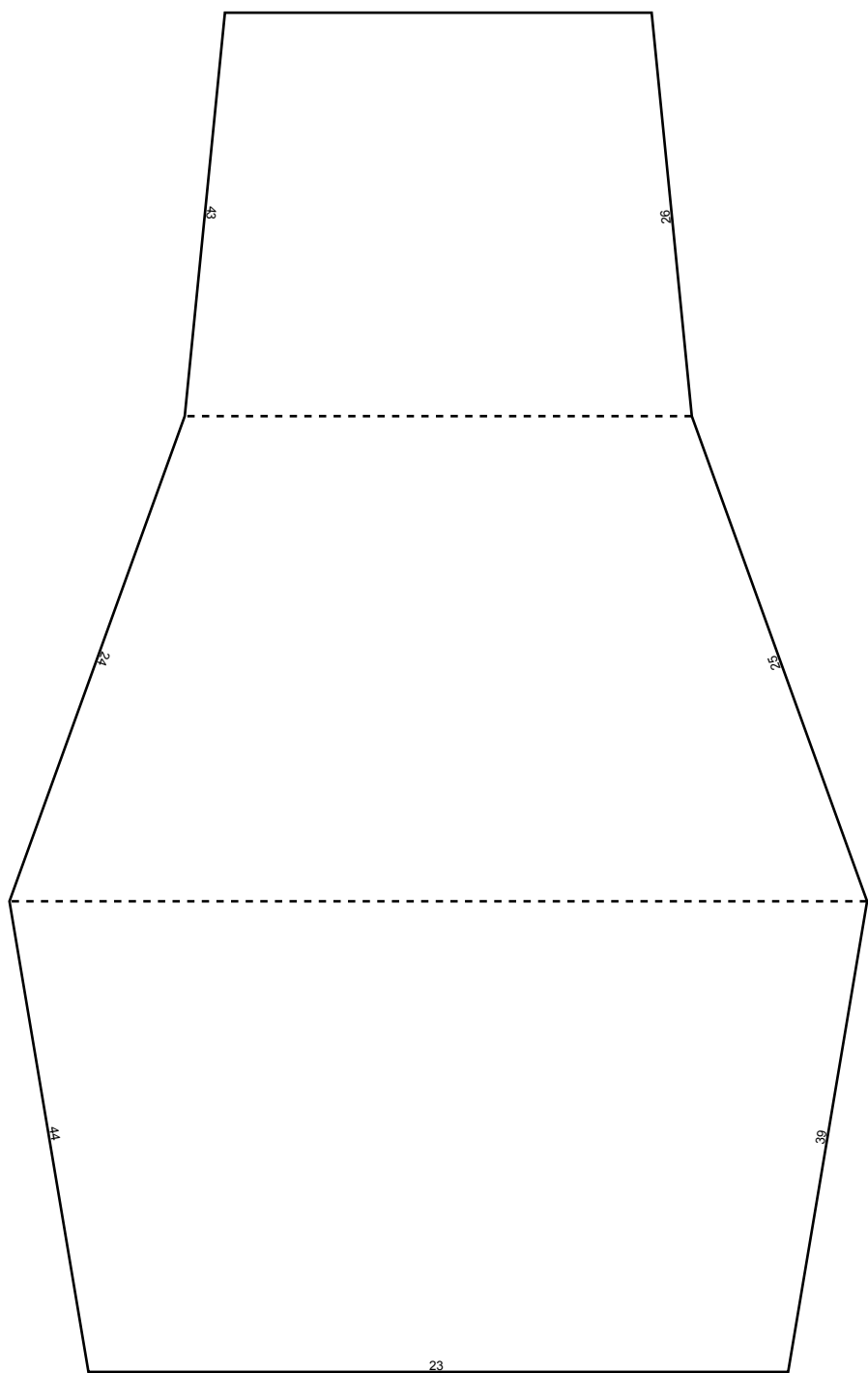


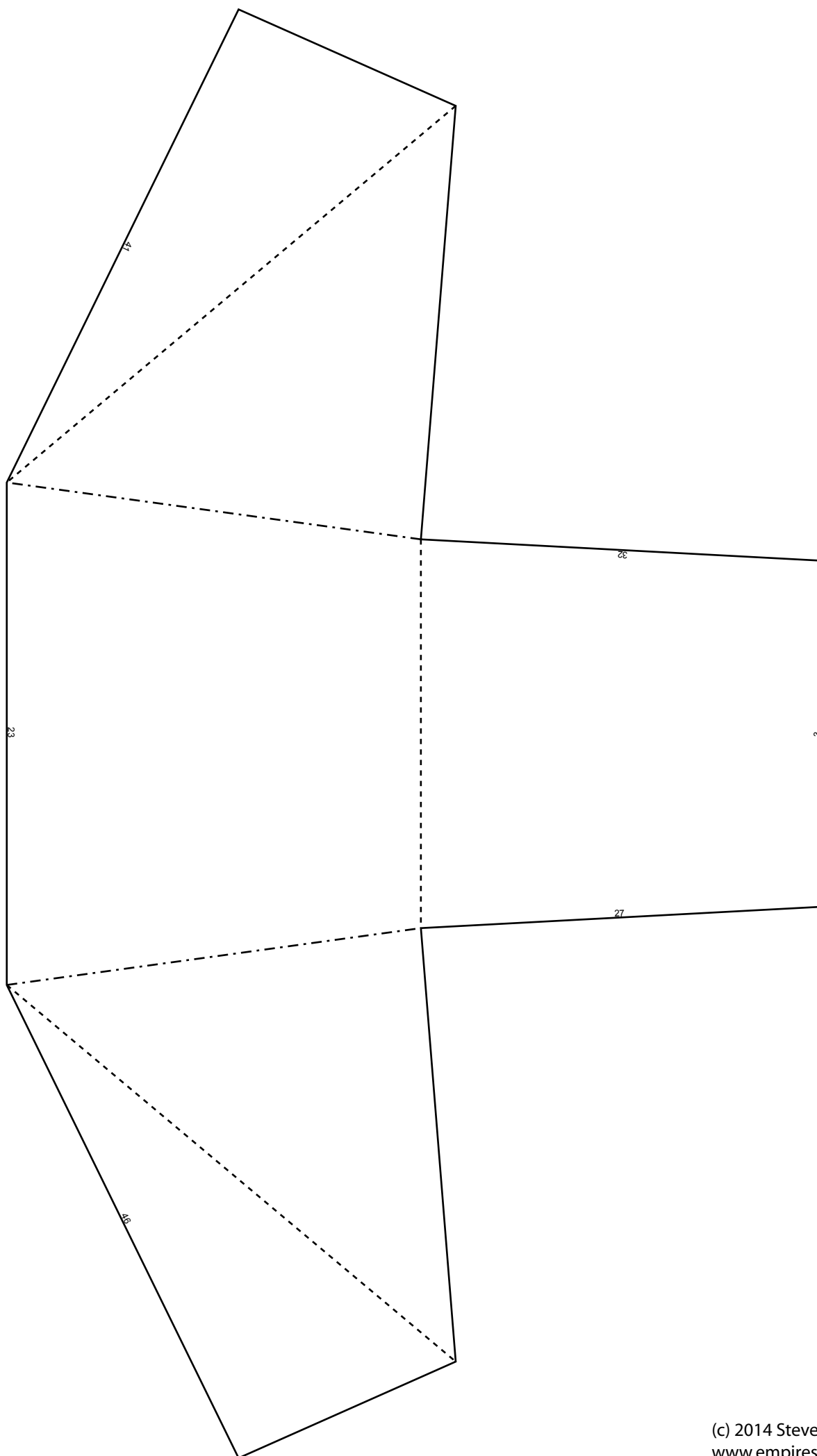


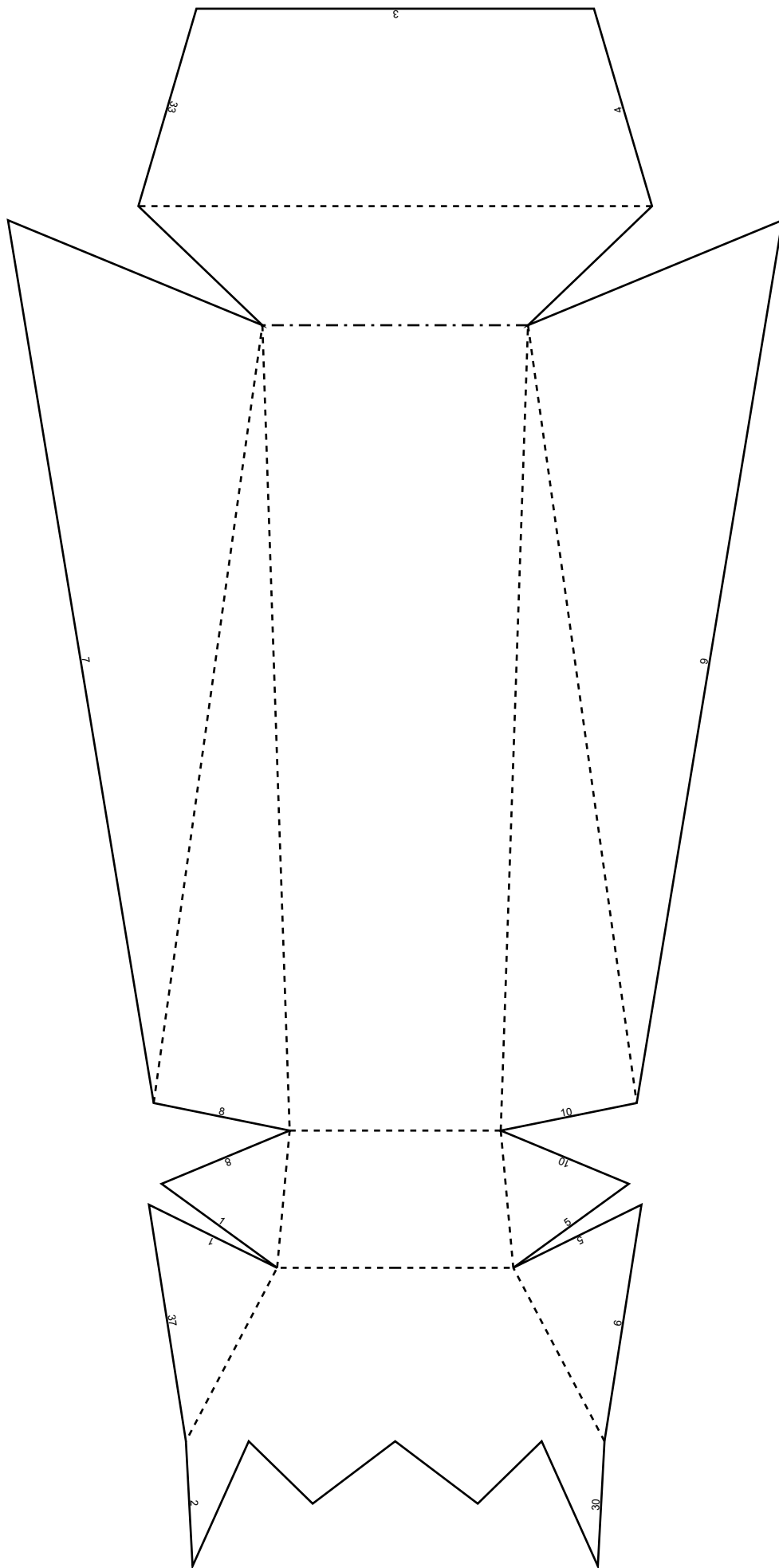




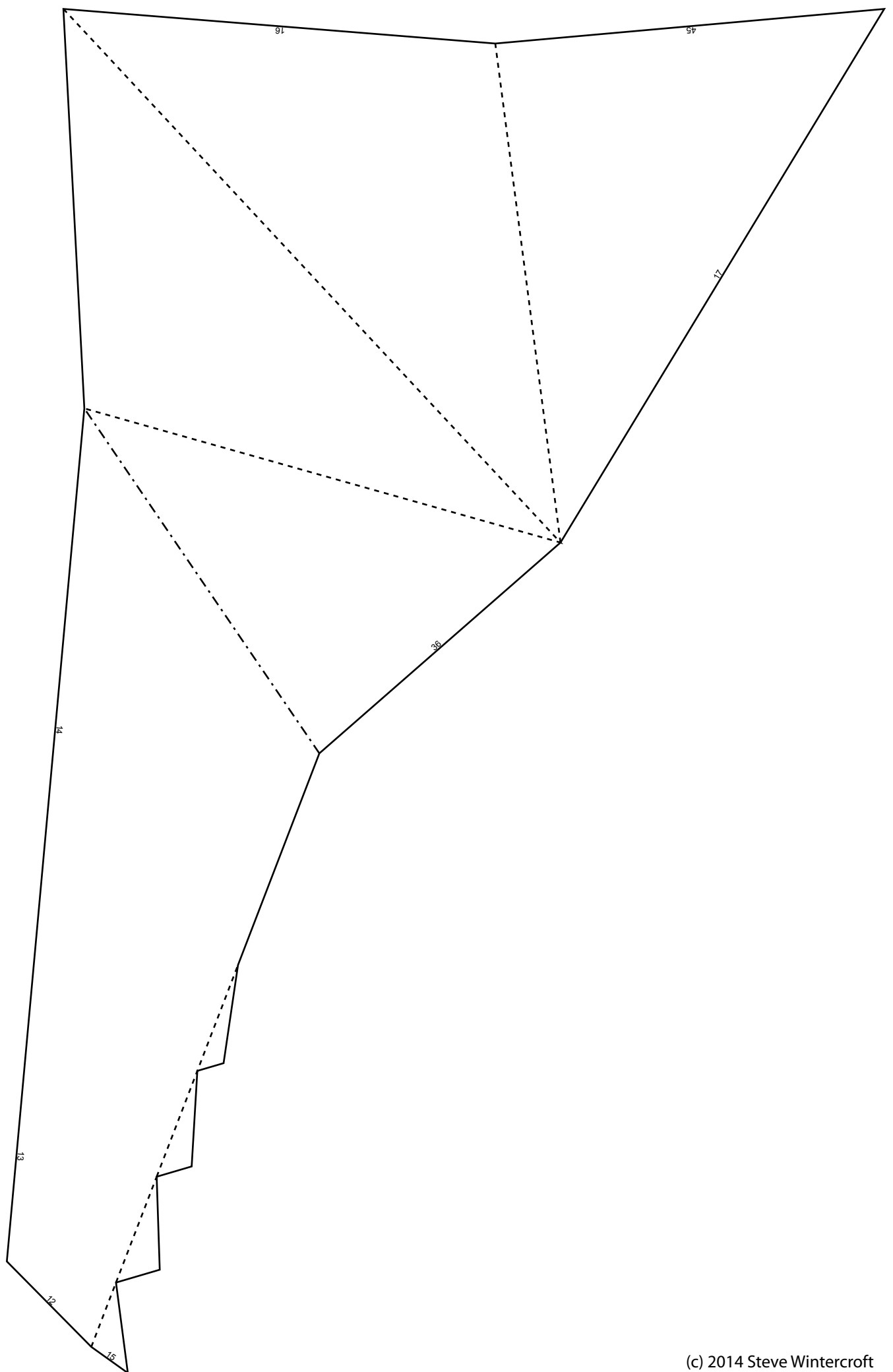












Head Band

To make sure that the mask fits well you can make a head band and fit it inside of the mask. cut two strips of card to roughly the dimesions below and the tape one end together. Then wrap the band around your head and tape the other end to get a good fit. The band should be snug but not tight. Take the band off your head and tape the tabs to the inside of the mask. You might need to move the tabs around a little until you get it fitting right.

